

## Anti-CLDN3 antibody (150-220 aa) [ABT509] (STJ197262)

### GENERAL INFORMATION

Product Type	Primary antibodies
Applications	IHC/WB
Host / Source	Mouse
Reactivity	Human/Mouse/Rat

### PRODUCT PROPERTIES

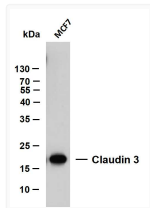
Clonality	Monoclonal
Conjugation	Unconjugated
Purification	The antibody was affinity-purified from mouse ascites by affinity-chromatography using specific immunogen.
Dilution Range	IHC-P 1:200-400 WB 1:200-1000
Formulation	Liquid in PBS pH7.2, 0.03% Proclin 300, with stabilizing protein.
Isotype	IgG2bk
Molecular Weight	Calculated: 23kD Observed: 22kD
Storage Instruction	Store at -20°C for up to 1 year from the date of receipt, and avoid repeat freeze-thaw cycles.

### TARGET INFORMATION

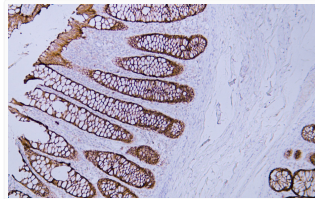
Gene ID	<a href="#">1365</a>
Gene Symbol	<a href="#">CLDN3</a>
UniProt ID	<a href="#">CLD3_HUMAN</a>
Immunogen Region	150-220 aa
Specificity	The antibody can specifically recognize human Claudin 3 protein.. The antibody was also Predict react with Mouse;Rat

### ADDITIONAL INFORMATION

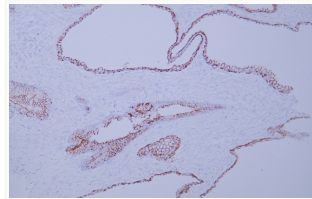
Note **STRICTLY FOR FURTHER SCIENTIFIC RESEARCH USE ONLY (RUO). MUST NOT TO BE USED IN DIAGNOSTIC OR THERAPEUTIC APPLICATIONS.**



Western Blot (WB): MCF7 whole cell lysates were separated by 12% SDS-PAGE, and the membrane was blotted with STJ197262



Immunohistochemistry - Paraffin (IHC-P): Human colon tissue was stained with Anti-Claudin 3 (ABT509) Antibody. STJ197262



Immunohistochemistry - Paraffin (IHC-P): Human prostate tissue was stained with Anti-Claudin 3 (ABT509) antibody. STJ197262