

## Anti-TCL1A antibody (50-114 aa) [ABT378] (STJ197247)

### GENERAL INFORMATION

Product Type	Primary antibodies
Applications	IHC/IF
Host / Source	Mouse
Reactivity	Human

### PRODUCT PROPERTIES

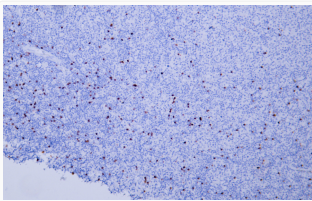
Clonality	Monoclonal
Conjugation	Unconjugated
Purification	The antibody was affinity-purified from mouse ascites by affinity-chromatography using specific immunogen.
Dilution Range	IHC-P 1:100-500 IF 1:100-500
Formulation	Liquid in PBS containing 50% Glycerol, 0.5% BSA and 0.02% Sodium Azide.
Isotype	IgG2bk
Molecular Weight	Calculated: 13kD Observed: 13kD
Storage Instruction	Store at -20°C for up to 1 year from the date of receipt, and avoid repeat freeze-thaw cycles.

### TARGET INFORMATION

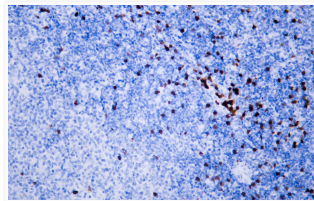
Gene ID	<a href="#">8115</a>
Gene Symbol	<a href="#">TCL1A</a>
UniProt ID	<a href="#">TCL1A_HUMAN</a>
Immunogen Region	50-114 aa
Specificity	The antibody can specifically recognize human TCL1 protein.

### ADDITIONAL INFORMATION

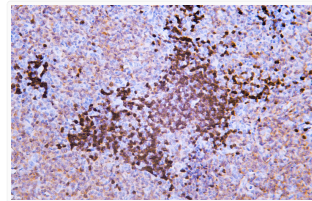
Note STRICTLY FOR FURTHER SCIENTIFIC RESEARCH USE ONLY (RUO). MUST NOT TO BE USED IN DIAGNOSTIC OR THERAPEUTIC APPLICATIONS.



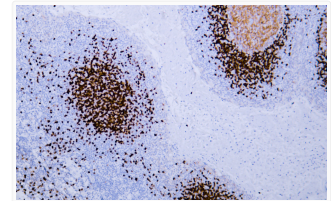
Human diffuse large B-cell lymphoma tissue was stained with Anti-TCL1 (ABT378) Antibody



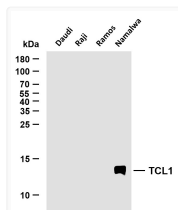
Human diffuse large B-cell lymphoma tissue was stained with Anti-TCL1 (ABT378) Antibody



Human follicular lymphoma tissue was stained with Anti-TCL1 (ABT378) Antibody



Human tonsil tissue was stained with Anti-TCL1 (ABT378) Antibody



Various whole cell lysates were separated by 15% SDS-PAGE, and the membrane was blotted with anti-TCL1 (ABT378) antibody. The HRP-conjugated Goat anti- mouse IgG (H + L) antibody was used to detect the antibody. Lane 1: Daudi Lane 2: Raji Lane 3: Ramos Lane 4: Namalwa Predicted band size: 13kDa Observed band size: 13kDa