

## Anti-GPC3 antibody (400-500 aa) [ABT180] (STJ197235)

### GENERAL INFORMATION

Product Type	Primary antibodies
Applications	IHC/WB/IF
Host / Source	Mouse
Reactivity	Human

### PRODUCT PROPERTIES

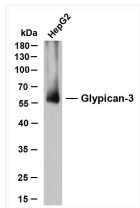
Clonality	Monoclonal
Conjugation	Unconjugated
Purification	The antibody was affinity-purified from mouse ascites by affinity-chromatography using specific immunogen.
Dilution Range	IHC-P 1:100-500 WB 1:200-1000 IF 1:100-500
Formulation	Liquid in PBS containing 50% Glycerol, 0.5% BSA and 0.02% Sodium Azide.
Isotype	IgG1k
Molecular Weight	Calculated: 66kD Observed: 58kD
Storage Instruction	Store at -20°C for up to 1 year from the date of receipt, and avoid repeat freeze-thaw cycles.

### TARGET INFORMATION

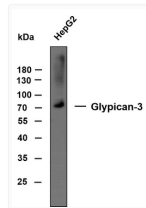
Gene ID	<a href="#">2719</a>
Gene Symbol	<a href="#">GPC3</a>
UniProt ID	<a href="#">GPC3_HUMAN</a>
Immunogen Region	400-500 aa
Specificity	The antibody can specifically recognize human Glypican-3 protein.

### ADDITIONAL INFORMATION

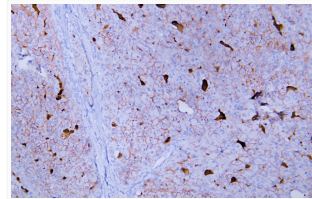
Note STRICTLY FOR FURTHER SCIENTIFIC RESEARCH USE ONLY (RUO). MUST NOT TO BE USED IN DIAGNOSTIC OR THERAPEUTIC APPLICATIONS.



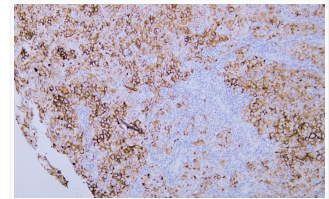
HepG2 whole cell lysates were separated by 10% SDS-PAGE, and the membrane was blotted with anti-Glypican-3 (ABT180) antibody. The HRP-conjugated Goat anti-mouse IgG (H + L) antibody was used to detect the antibody. Lane 1: HepG2 Predicted band size: 58kDa Observed band size: 58kDa



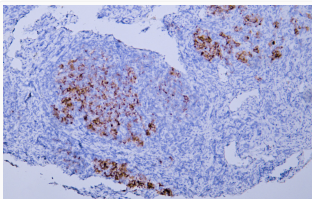
Whole cell lysates of HepG2 (30ug) were separated by 10% SDS-PAGE, and the membrane was blotted with Ganti-lypican-3 antibody. The HRP-conjugated anti-mouse IgG antibody was used to detect the antibody. Predicted band size: 66kDa Observed band size: 70kDa



Human hepatocellular carcinoma tissue was stained with Anti-Glypican-3 (ABT180) Antibody



Human hepatocellular carcinoma tissue was stained with Anti-Glypican-3 (ABT180) Antibody



Human hepatocellular carcinoma tissue was stained with Anti-Glypican-3 (ABT180) Antibody