

Anti-MYH11 antibody (300-400 aa) [ABT206] (STJ197174)

GENERAL INFORMATION

Product Type	Primary antibodies
Applications	IHC/IF
Host / Source	Mouse
Reactivity	Human/Mouse/Rat

PRODUCT PROPERTIES

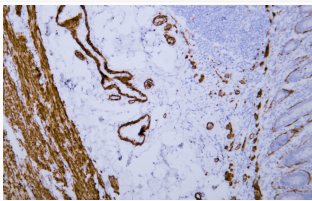
Clonality	Monoclonal
Conjugation	Unconjugated
Purification	The antibody was affinity-purified from mouse ascites by affinity-chromatography using specific immunogen.
Dilution Range	IHC-P 1:100-500 IF 1:100-500
Formulation	Liquid in PBS containing 50% Glycerol, 0.5% BSA and 0.02% Sodium Azide.
Isotype	IgG1k
Molecular Weight	Calculated: 227kD Observed: 227kD
Storage Instruction	Store at -20°C for up to 1 year from the date of receipt, and avoid repeat freeze-thaw cycles.

TARGET INFORMATION

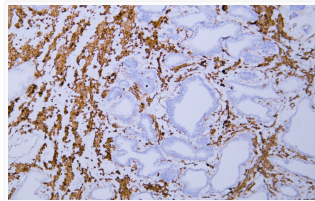
Gene ID	4629
Gene Symbol	MYH11
UniProt ID	MYH11_HUMAN
Immunogen Region	300-400 aa
Specificity	The antibody can specifically recognize human Myoglobin protein.

ADDITIONAL INFORMATION

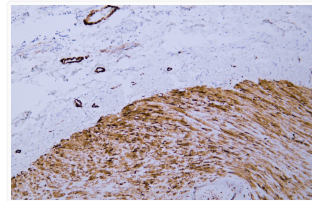
Note STRICTLY FOR FURTHER SCIENTIFIC RESEARCH USE ONLY (RUO). MUST NOT TO BE USED IN DIAGNOSTIC OR THERAPEUTIC APPLICATIONS.



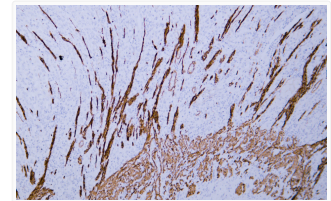
Human appendix tissue was stained with Anti-Myosin Heavy Chain, Smooth Muscle (SMMHC) (ABT206) Antibody



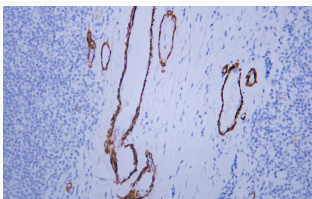
Human prostate tissue was stained with Anti-Myosin Heavy Chain, Smooth Muscle (SMMHC) (ABT206) Antibody



Human smooth muscle tissue was stained with Anti-Myosin Heavy Chain, Smooth Muscle (SMMHC) (ABT206) Antibody



Human stomach tissue was stained with Anti-Myosin Heavy Chain, Smooth Muscle (SMMHC) (ABT206) Antibody



Human tonsil tissue was stained with Anti-Myosin Heavy Chain, Smooth Muscle (SMMHC) (ABT206) Antibody