

## Anti-KRT16 antibody (400-473 aa) [ABT059] (STJ197141)

### GENERAL INFORMATION

Product Type	Primary antibodies
Applications	IHC/WB/IF
Host / Source	Mouse
Reactivity	Human

### PRODUCT PROPERTIES

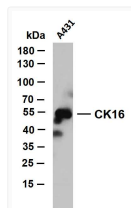
Clonality	Monoclonal
Conjugation	Unconjugated
Purification	The antibody was affinity-purified from mouse ascites by affinity-chromatography using specific immunogen.
Dilution Range	IHC-P 1:100-500 WB 1:200-1000 IF 1:100-500
Formulation	Liquid in PBS containing 50% Glycerol, 0.5% BSA and 0.02% Sodium Azide.
Isotype	IgG2bk
Molecular Weight	Calculated: 51kD Observed: 55kD
Storage Instruction	Store at -20°C for up to 1 year from the date of receipt, and avoid repeat freeze-thaw cycles.

### TARGET INFORMATION

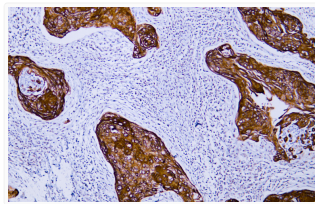
Gene ID	<a href="#">3868</a>
Gene Symbol	<a href="#">KRT16</a>
UniProt ID	<a href="#">K1C16_HUMAN</a>
Immunogen Region	400-473 aa
Specificity	The antibody can specifically recognize human CK16 protein, and shows no cross reaction with CK1, 5, 6, 7, 8, 10, 13, 14, 15, 19, 20.

### ADDITIONAL INFORMATION

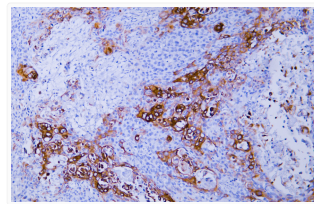
Note STRICTLY FOR FURTHER SCIENTIFIC RESEARCH USE ONLY (RUO). MUST NOT TO BE USED IN DIAGNOSTIC OR THERAPEUTIC APPLICATIONS.



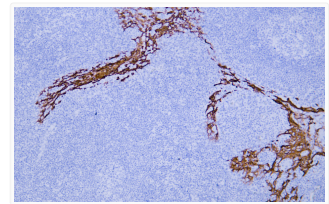
A431 whole cell lysates were separated by 10% SDS-PAGE, and the membrane was blotted with anti-CK16 (ABT059) antibody. The HRP-conjugated Goat anti-mouse IgG (H + L) antibody was used to detect the antibody. Lane 1: A431 Predicted band size: 51kDa Observed band size: 55kDa



Human cervical squamous cell carcinoma tissue was stained with Anti-Cytokeratin 16 (ABT059) Antibody



Human esophageal squamous cell carcinoma tissue was stained with Anti-Cytokeratin 16 (ABT059) Antibody



Human tonsil tissue was stained with Anti-Cytokeratin 16 (ABT059) Antibody