

Anti-KRT10 antibody (500-584 aa) [ABT056] (STJ197137)

GENERAL INFORMATION

Product Type	Primary antibodies
Applications	IHC/IF
Host / Source	Mouse
Reactivity	Human/Mouse/Rat

PRODUCT PROPERTIES

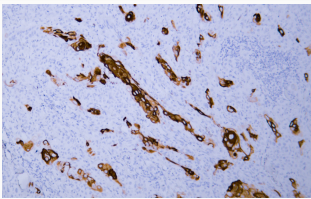
Clonality	Monoclonal
Conjugation	Unconjugated
Purification	The antibody was affinity-purified from mouse ascites by affinity-chromatography using specific immunogen.
Dilution Range	IHC-P 1:100-500 IF 1:100-500
Formulation	Liquid in PBS containing 50% Glycerol, 0.5% BSA and 0.02% Sodium Azide.
Isotype	IgG1k
Molecular Weight	Calculated: 60kD Observed: 70kD
Storage Instruction	Store at -20°C for up to 1 year from the date of receipt, and avoid repeat freeze-thaw cycles.

TARGET INFORMATION

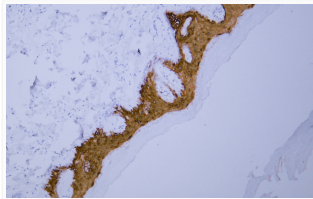
Gene ID	3858
Gene Symbol	KRT10
UniProt ID	K1C10_HUMAN
Immunogen Region	500-584 aa
Specificity	The antibody can specifically recognize human CK10 protein, and shows no cross reaction with CK4, 5, 6, 7, 8, 14, 15, 18, 19.. The antibody was also Predict react with Mouse;Rat

ADDITIONAL INFORMATION

Note STRICTLY FOR FURTHER SCIENTIFIC RESEARCH USE ONLY (RUO). MUST NOT TO BE USED IN DIAGNOSTIC OR THERAPEUTIC APPLICATIONS.



Human cervix tissue was stained with Anti-Cytokeratin 10 (ABT056) Antibody



Human skin tissue was stained with Anti-Cytokeratin 10 (ABT056) Antibody