

Anti-COL2A1 antibody (1200-1300 aa) [ABT501] (STJ197134)

GENERAL INFORMATION

Product Type	Primary antibodies
Applications	IHC/IF
Host / Source	Mouse
Reactivity	Human/Mouse/Rat

PRODUCT PROPERTIES

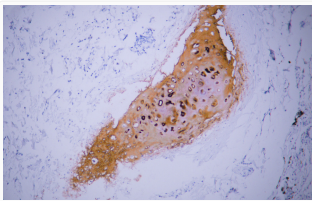
Clonality	Monoclonal
Conjugation	Unconjugated
Purification	The antibody was affinity-purified from mouse ascites by affinity-chromatography using specific immunogen.
Dilution Range	IHC-P 1:100-500 IF 1:100-500
Formulation	Liquid in PBS containing 50% Glycerol, 0.5% BSA and 0.02% Sodium Azide.
Isotype	IgG2bk
Molecular Weight	Calculated: 141kD
Storage Instruction	Store at -20°C for up to 1 year from the date of receipt, and avoid repeat freeze-thaw cycles.

TARGET INFORMATION

Gene ID	1280
Gene Symbol	COL2A1
UniProt ID	CO2A1_HUMAN
Immunogen Region	1200-1300 aa
Specificity	The antibody can specifically recognize human Collagen Type II protein, collagen types I, III, IV and V do not respond to the antibody. The antibody was also Predict react with Mouse;Rat

ADDITIONAL INFORMATION

Note	STRICTLY FOR FURTHER SCIENTIFIC RESEARCH USE ONLY (RUO). MUST NOT TO BE USED IN DIAGNOSTIC OR THERAPEUTIC APPLICATIONS.
------	---



Human cartilage tissue was stained with Anti-Collagen Type II (ABT501) Antibody