

Anti-MS4A1 antibody (200-297 aa) [ABT065] (STJ197112)

GENERAL INFORMATION

Product Type	Primary antibodies
Applications	IHC/WB/IF
Host / Source	Mouse
Reactivity	Human

PRODUCT PROPERTIES

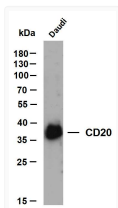
Clonality	Monoclonal
Conjugation	Unconjugated
Purification	The antibody was affinity-purified from mouse ascites by affinity-chromatography using specific immunogen.
Dilution Range	IHC-P 1:100-500 WB 1:200-1000 IF 1:100-500
Formulation	Liquid in PBS containing 50% Glycerol, 0.5% BSA and 0.02% Sodium Azide.
Isotype	IgG1k
Molecular Weight	Calculated: 33kD Observed: 35kD
Storage Instruction	Store at -20°C for up to 1 year from the date of receipt, and avoid repeat freeze-thaw cycles.

TARGET INFORMATION

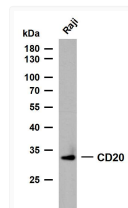
Gene ID	931
Gene Symbol	MS4A1
UniProt ID	CD20_HUMAN
Immunogen Region	200-297 aa
Specificity	The antibody can specifically recognize human CD20 protein.

ADDITIONAL INFORMATION

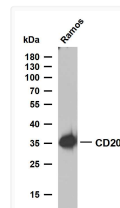
Note STRICTLY FOR FURTHER SCIENTIFIC RESEARCH USE ONLY (RUO). MUST NOT TO BE USED IN DIAGNOSTIC OR THERAPEUTIC APPLICATIONS.



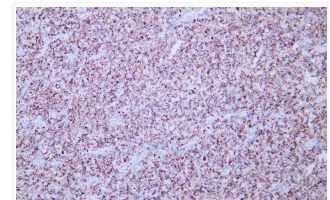
Whole cell lysates were separated by 10% SDS-PAGE, and the membrane was blotted with anti-CD20 (ABT065) antibody. The HRP-conjugated Goat anti-mouse IgG (H + L) antibody was used to detect the antibody. Lane 1: Daudi Predicted band size: 33kDa Observed band size: 35kDa



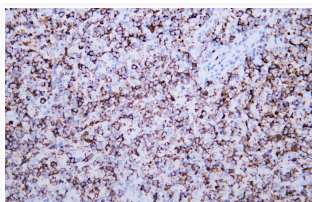
Raji whole cell lysates were separated by 10% SDS-PAGE, and the membrane was blotted with anti-CD20 (ABT065) antibody. The HRP-conjugated Goat anti-mouse IgG (H + L) antibody was used to detect the antibody. Lane 1: Raji Predicted band size: 33kDa Observed band size: 35kDa



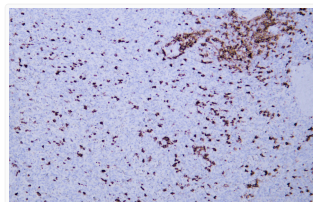
Ramos whole cell lysates were separated by 10% SDS-PAGE, and the membrane was blotted with anti-CD20 (ABT065) antibody. The HRP-conjugated Goat anti-mouse IgG (H + L) antibody was used to detect the antibody. Lane 1: Ramos Predicted band size: 33kDa Observed band size: 35kDa



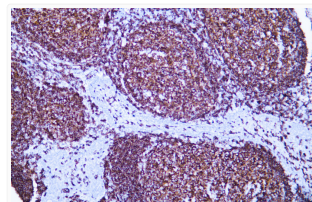
Human diffuse large B-cell lymphoma tissue was stained with Anti-CD20 (ABT065) Antibody



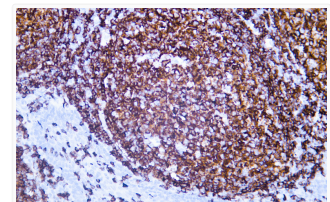
Human diffuse large B-cell lymphoma tissue was stained with Anti-CD20 (ABT065) Antibody



Human spleen tissue was stained with anti-CD20 (ABT065) antibody.



Human tonsil tissue was stained with anti-CD20 (ABT065) antibody.



Human tonsil tissue was stained with anti-CD20 (ABT065) antibody.