

## Anti-MUC1 antibody (100-200 aa) [ABT100] (STJ197090)

### GENERAL INFORMATION

|               |                    |
|---------------|--------------------|
| Product Type  | Primary antibodies |
| Applications  | IHC/WB             |
| Host / Source | Mouse              |
| Reactivity    | Human              |

### PRODUCT PROPERTIES

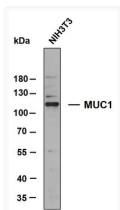
|                     |  |
|---------------------|--|
| Clonality           | Monoclonal   |
| Conjugation         | Unconjugated   |
| Purification        | The antibody was affinity-purified from mouse ascites by affinity-chromatography using specific immunogen. |
| Dilution Range      | IHC-P 1:100-500<br>WB 1:200-1000<br>IF 1:100-500   |
| Formulation         | Liquid in PBS containing 50% Glycerol, 0.5% BSA and 0.02% Sodium Azide.                                    |
| Isotype             | IgG1k  |
| Molecular Weight    | Calculated: 122kD<br>Observed: 122kD   |
| Storage Instruction | Store at -20°C for up to 1 year from the date of receipt, and avoid repeat freeze-thaw cycles.             |

### TARGET INFORMATION

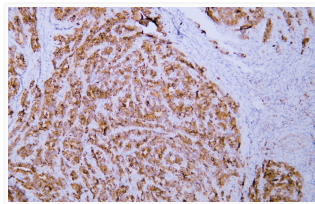
|                  |  |
|------------------|--|
| Gene ID          | <a href="#">4582</a>   |
| Gene Symbol      | <a href="#">MUC1</a>   |
| UniProt ID       | <a href="#">MUC1_HUMAN</a>   |
| Immunogen Region | 100-200 aa   |
| Specificity      | The antibody can specifically recognize human MUC1 protein. In western blotting of NIH3T3 cell lysate, there shows a 122kDa band detected by the antibody. |

### ADDITIONAL INFORMATION

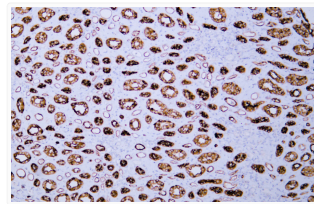
**Note** STRICTLY FOR FURTHER SCIENTIFIC RESEARCH USE ONLY (RUO). MUST NOT TO BE USED IN DIAGNOSTIC OR THERAPEUTIC APPLICATIONS.



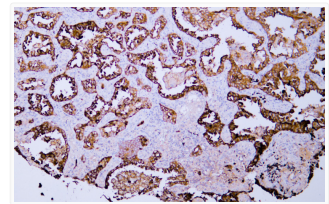
Whole cell lysates of NIH3T3 were separated by 8% SDS-PAGE, and the membrane was blotted with anti-MUC1 antibody. The HRP-conjugated anti-mouse IgG antibody was used to detect the antibody. Predicted band size: 122 kDa



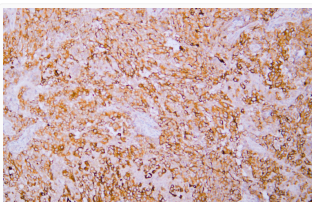
Human gastric adenocarcinoma tissue was stained with Anti-MUC1 (ABT100) Antibody



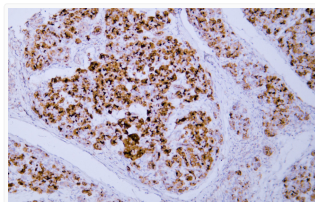
Human kidney tissue was stained with Anti-MUC1 (ABT100) Antibody



Human lung adenocarcinoma tissue was stained with Anti-MUC1 (ABT100) Antibody



Human mesothelioma tissue was stained with Anti-MUC1 (ABT100) Antibody



Human pancreas tissue was stained with Anti-MUC1 (ABT100) Antibody