

Anti-ENO2 antibody (300-434 aa) [PT2281] (STJ197039)

GENERAL INFORMATION

Product Type	Primary antibodies
Applications	IHC/WB
Host / Source	Mouse
Reactivity	Human/Mouse/Rat

PRODUCT PROPERTIES

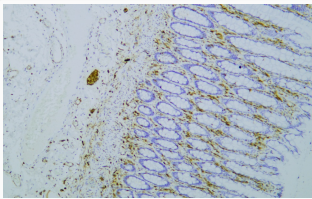
Clonality	Monoclonal
Conjugation	Unconjugated
Purification	The antibody was affinity-purified from mouse ascites by affinity-chromatography using specific immunogen.
Dilution Range	IHC-P 1:100-500 WB 1:200-1000
Formulation	Liquid in PBS containing 50% Glycerol, 0.5% BSA and 0.02% Sodium Azide.
Isotype	IgG1k
Molecular Weight	Calculated: 47kD Observed: 47kD
Storage Instruction	Store at -20°C for up to 1 year from the date of receipt, and avoid repeat freeze-thaw cycles.

TARGET INFORMATION

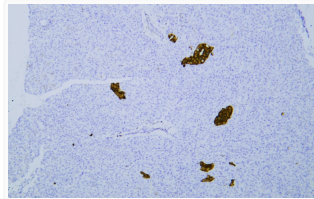
Gene ID	2026
Gene Symbol	ENO2
UniProt ID	ENOG_HUMAN
Immunogen Region	300-434 aa
Specificity	This antibody detects endogenous levels of human Neuron-Specific Enolase (NSE). Heat-induced epitope retrieval (HIER) TRIS-EDTA of pH9.0 was highly recommended as antigen repair method in paraffin sect

ADDITIONAL INFORMATION

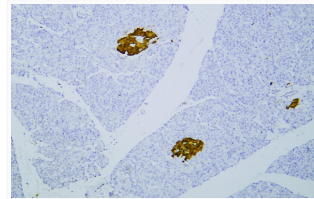
Note **STRICTLY FOR FURTHER SCIENTIFIC RESEARCH USE ONLY (RUO). MUST NOT TO BE USED IN DIAGNOSTIC OR THERAPEUTIC APPLICATIONS.**



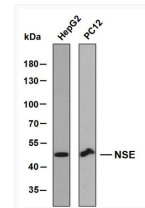
Human colon tissue was stained with Anti-NSE (PT2281) Antibody



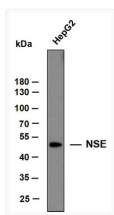
Human pancreas tissue was stained with Anti-NSE (PT2281) Antibody



Human pancreas tissue was stained with Anti-NSE (PT2281) Antibody



Various whole cell lysates were separated by 8% SDS-PAGE, and the membrane was blotted with anti-NSE antibody. The HRP-conjugated anti-mouse IgG antibody was used to detect the antibody. Predicted band size: 47 kDa



Whole cell lysates of HepG2 were separated by 10% SDS-PAGE, and the membrane was blotted with anti-NSE antibody. The HRP-conjugated anti-mouse IgG antibody was used to detect the antibody. Predicted band size: 47 kDa