

Anti-MLANA antibody (50-118 aa) [ABT-Mart1] (STJ197030)

GENERAL INFORMATION

Product Type	Primary antibodies
Applications	IHC/IF
Host / Source	Mouse
Reactivity	Human/Mouse/Rat

PRODUCT PROPERTIES

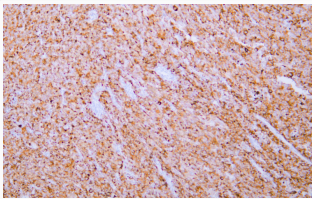
Clonality	Monoclonal
Conjugation	Unconjugated
Purification	The antibody was affinity-purified from mouse ascites by affinity-chromatography using specific immunogen.
Dilution Range	IHC-P 1:300-500 IF 1:50-200
Formulation	Liquid in PBS containing 50% Glycerol, 0.5% BSA and 0.02% Sodium Azide.
Isotype	IgG2bk
Molecular Weight	Calculated: 13kD Observed: 18kD
Storage Instruction	Store at -20°C for up to 1 year from the date of receipt, and avoid repeat freeze-thaw cycles.

TARGET INFORMATION

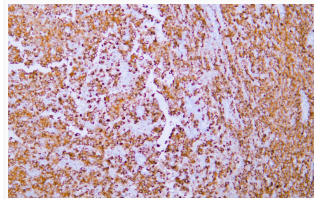
Gene ID	2315
Gene Symbol	MLANA
UniProt ID	MAR1_HUMAN
Immunogen Region	50-118 aa
Specificity	This antibody detects endogenous levels of human Mart-1/Melan-A. Heat-induced epitope retrieval (HIER) TRIS-EDTA of pH9.0 was highly recommended as antigen repair method in paraffin section. The antib

ADDITIONAL INFORMATION

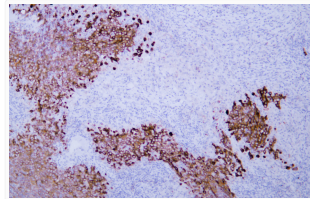
Note **STRICTLY FOR FURTHER SCIENTIFIC RESEARCH USE ONLY (RUO). MUST NOT TO BE USED IN DIAGNOSTIC OR THERAPEUTIC APPLICATIONS.**



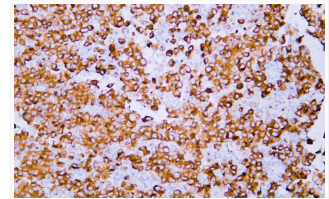
Human malignant melanoma tissue was stained with Anti-Melan-A (ABT-Mart1) Antibody



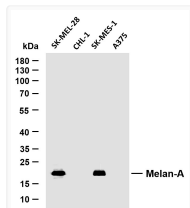
Human malignant melanoma tissue was stained with Anti-Melan-A (ABT-Mart1) Antibody



Human malignant melanoma tissue was stained with Anti-Melan-A (ABT-Mart1) Antibody



Human malignant melanoma tissue was stained with Anti-Melan-A (ABT-Mart1) Antibody



Various whole cell lysates were separated by 10% SDS-PAGE, and the membrane was blotted with anti-Melan-A (ABT-Mart1) antibody. The HRP-conjugated Goat anti- mouse IgG (H + L) antibody was used to detect the antibody. Lane 1: SK-MEL-28 Lane 2: CHL-1 Lane 3: SK-MES-1 Lane 4: A375
 Predicted band size: 13kDa
 Observed band size: 18kDa