

## Anti-S100B antibody (1-50 aa) [ABT-S100B] (STJ197003)

### GENERAL INFORMATION

Product Type	Primary antibodies
Applications	IHC/IF
Host / Source	Mouse
Reactivity	Human

### PRODUCT PROPERTIES

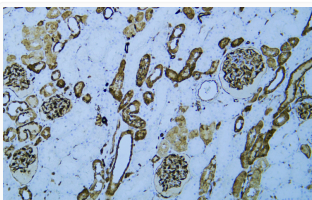
Clonality	Monoclonal
Conjugation	Unconjugated
Purification	The antibody was affinity-purified from mouse ascites by affinity-chromatography using specific immunogen.
Dilution Range	WB 500-2000 IHC-P 1:100-500 IF 1:50-200
Formulation	Liquid in PBS containing 50% Glycerol, 0.5% BSA and 0.02% Sodium Azide.
Isotype	IgG1k
Molecular Weight	Calculated: 11kD
Storage Instruction	Store at -20°C for up to 1 year from the date of receipt, and avoid repeat freeze-thaw cycles.

### TARGET INFORMATION

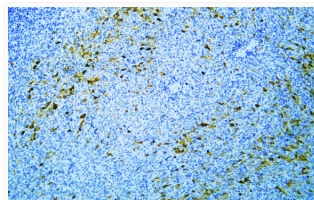
Gene ID	<a href="#">6285</a>
Gene Symbol	<a href="#">S100B</a>
UniProt ID	<a href="#">S100B_HUMAN</a>
Immunogen Region	1-50 aa
Specificity	This antibody detects endogenous levels of human S100. Heat-induced epitope retrieval (HIER) Citrate buffer of pH6.0 was highly recommended as antigen repair method in paraffin section

### ADDITIONAL INFORMATION

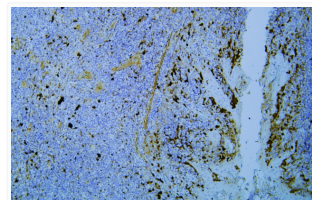
Note **STRICTLY FOR FURTHER SCIENTIFIC RESEARCH USE ONLY (RUO). MUST NOT TO BE USED IN DIAGNOSTIC OR THERAPEUTIC APPLICATIONS.**



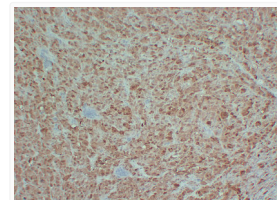
Human Kidney tissue was stained with Anti-S100 (ABT-S100B) Antibody



Human malignant melanoma tissue was stained with Anti-S100 (ABT-S100B) Antibody



Human tonsil tissue was stained with Anti-S100 (ABT-S100B) Antibody



Immunohistochemical analysis of paraffin-embedded Malignant melanoma. 1, Antibody was diluted at 1:200 (4°C overnight). 2, Citrate buffer of pH6.0 was used for antigen retrieval. 3, Secondary antibody was diluted at 1:200 (room temperature, 30min).