

Anti-SMARCB1 antibody (300-385 aa) [ABT-INI1] (STJ196996)

GENERAL INFORMATION

Product Type	Primary antibodies
Applications	IHC/WB
Host / Source	Mouse
Reactivity	Human/Mouse/Rat

PRODUCT PROPERTIES

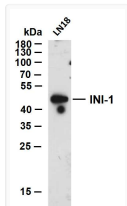
Clonality	Monoclonal
Conjugation	Unconjugated
Purification	The antibody was affinity-purified from mouse ascites by affinity-chromatography using specific immunogen.
Dilution Range	IHC-P 1:100-500 WB 1:500-2000
Formulation	Liquid in PBS containing 50% Glycerol, 0.5% BSA and 0.02% Sodium Azide.
Isotype	IgG2bk
Molecular Weight	Calculated: 44kD Observed: 44kD
Storage Instruction	Store at -20°C for up to 1 year from the date of receipt, and avoid repeat freeze-thaw cycles.

TARGET INFORMATION

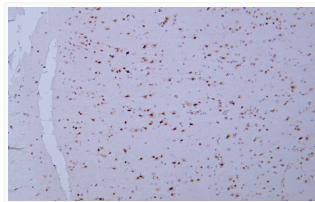
Gene ID	6598
Gene Symbol	SMARCB1
UniProt ID	SNF5_HUMAN
Immunogen Region	300-385 aa
Specificity	This antibody detects endogenous levels of human INI-1. Heat-induced epitope retrieval (HIER) Citrate buffer of pH6.0 was highly recommended as antigen repair method in paraffin section

ADDITIONAL INFORMATION

Note STRICTLY FOR FURTHER SCIENTIFIC RESEARCH USE ONLY (RUO). MUST NOT TO BE USED IN DIAGNOSTIC OR THERAPEUTIC APPLICATIONS.



Western Blot (WB): LN18 whole cell lysates were separated by 12% SDS-PAGE, and the membrane was blotted with anti-INI-1 STJ196996



Immunohistochemistry (IHC): Human cerebrum tissue was stained with Anti-INI1 (ABT-INI1) Antibody STJ196996