

Anti-TIMP1 antibody (50-150 aa) [PT2236] (STJ196989)

GENERAL INFORMATION

Product Type	Primary antibodies
Applications	IHC/IF/WB
Host / Source	Mouse
Reactivity	Human

PRODUCT PROPERTIES

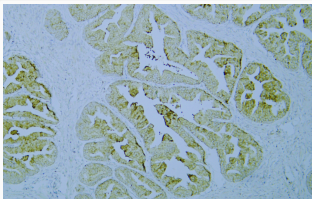
Clonality	Monoclonal
Conjugation	Unconjugated
Purification	The antibody was affinity-purified from mouse ascites by affinity-chromatography using specific immunogen.
Dilution Range	WB 500-2000 IHC-P 1:100-500 IF 1:50-200
Formulation	Liquid in PBS containing 50% Glycerol, 0.5% BSA and 0.02% Sodium Azide.
Isotype	IgG1k
Molecular Weight	Calculated: 23kD Observed: 23kD
Storage Instruction	Store at -20°C for up to 1 year from the date of receipt, and avoid repeat freeze-thaw cycles.

TARGET INFORMATION

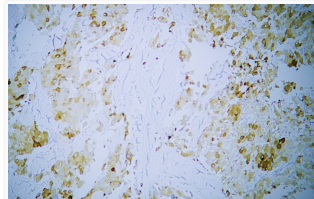
Gene ID	7076
Gene Symbol	TIMP1
UniProt ID	TIMP1_HUMAN
Immunogen Region	50-150 aa
Specificity	This antibody detects endogenous levels of human Metalloproteinase inhibitor 1 (Erythroid-potentiating activity) (EPA) (Fibroblast collagenase inhibitor) (Collagenase inhibitor) (Tissue inhibitor of m

ADDITIONAL INFORMATION

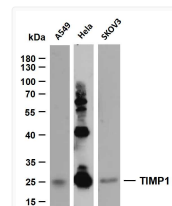
Note STRICTLY FOR FURTHER SCIENTIFIC RESEARCH USE ONLY (RUO). MUST NOT TO BE USED IN DIAGNOSTIC OR THERAPEUTIC APPLICATIONS.



Human prostate tissue was stained with Anti-TIMP1 (PT2236) Antibody



Human thyroid carcinoma tissue was stained with Anti-TIMP1 (PT2236) Antibody



Various whole cell lysates were separated by 10% SDS-PAGE, and the membrane was blotted with anti-TIMP1 (PT2236) antibody. The HRP-conjugated Goat anti- mouse IgG (H + L) antibody was used to detect the antibody. Lane 1: A549 Lane 2: HeLa Lane 3: SKOV3 Predicted band size: 23kDa Observed band size: 23kDa