

Anti-KRT19 antibody (200-300 aa) [ABT-CK19] (STJ196921)

GENERAL INFORMATION

Product Type	Primary antibodies
Applications	IHC/WB
Host / Source	Mouse
Reactivity	Human

PRODUCT PROPERTIES

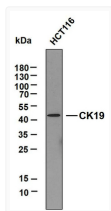
Clonality	Monoclonal
Conjugation	Unconjugated
Purification	The antibody was affinity-purified from mouse ascites by affinity-chromatography using specific immunogen.
Dilution Range	IHC-P 1:100-500 WB 1:500-2000
Formulation	Liquid in PBS containing 50% Glycerol, 0.5% BSA and 0.02% Sodium Azide.
Isotype	IgG1k
Molecular Weight	Calculated: 44kD Observed: 44kD
Storage Instruction	Store at -20°C for up to 1 year from the date of receipt, and avoid repeat freeze-thaw cycles.

TARGET INFORMATION

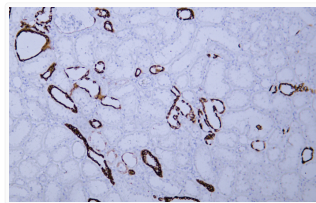
Gene ID	3880 3858
Gene Symbol	KRT19 KRT10
UniProt ID	K1C19_HUMAN K1C10_HUMAN
Immunogen Region	200-300 aa
Specificity	This antibody detects endogenous levels of human Cytokeratin 19. Heat-induced epitope retrieval (HIER) TRIS-EDTA of pH8.0 was highly recommended as antigen repair method in paraffin section

ADDITIONAL INFORMATION

Note STRICTLY FOR FURTHER SCIENTIFIC RESEARCH USE ONLY (RUO). MUST NOT TO BE USED IN DIAGNOSTIC OR THERAPEUTIC APPLICATIONS.



Western Blot (WB): Whole cell lysates of HCT116 were separated by 12% SDS-PAGE, and the membrane was blotted with STJ196921



Immunohistochemistry - Paraffin (IHC-P): Human kidney tissue was stained with Anti-Cytokeratin 19/10 (ABT-CK19) Antibody STJ196921