

## Anti-Actin, smooth muscle antibody (1-100 aa) [ABT-SMA] (STJ196911)

### GENERAL INFORMATION

Product Type	Primary antibodies
Applications	IHC/WB/IF
Host / Source	Mouse
Reactivity	Human/Mouse/Rat

### PRODUCT PROPERTIES

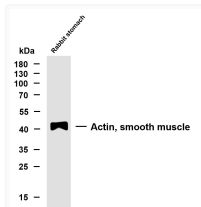
Clonality	Monoclonal
Conjugation	Unconjugated
Purification	The antibody was affinity-purified from mouse ascites by affinity-chromatography using specific immunogen.
Dilution Range	IHC-P 1:300-500 IF 1:50-200 WB 1:200-1000
Formulation	Liquid in PBS containing 50% Glycerol, 0.5% BSA and 0.02% Sodium Azide.
Isotype	IgG2ak
Molecular Weight	Observed: 42kD
Storage Instruction	Store at -20°C for up to 1 year from the date of receipt, and avoid repeat freeze-thaw cycles.

### TARGET INFORMATION

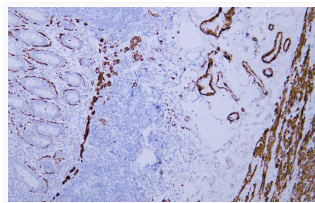
Gene ID	<a href="#">5972</a>
Gene Symbol	<a href="#">ACTA2</a> <a href="#">ACTG2</a>
UniProt ID	<a href="#">ACTA_HUMAN</a> <a href="#">ACTH_HUMAN</a>
Immunogen Region	1-100 aa
Specificity	This antibody detects endogenous levels of human Actin, smooth muscle (SMA). Heat-induced epitope retrieval (HIER) TRIS-EDTA of pH8.0 was highly recommended as antigen repair method in paraffin section

### ADDITIONAL INFORMATION

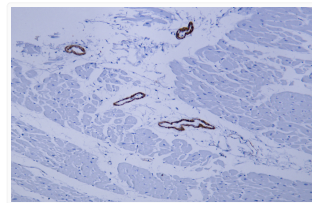
Note STRICTLY FOR FURTHER SCIENTIFIC RESEARCH USE ONLY (RUO). MUST NOT TO BE USED IN DIAGNOSTIC OR THERAPEUTIC APPLICATIONS.



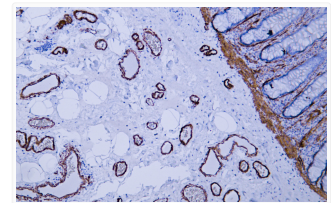
Whole cell lysates were separated by 10% SDS-PAGE, and the membrane was blotted with anti-Actin, smooth muscle (ABT-SMA) antibody. The HRP-conjugated Goat anti-mouse IgG (H + L) antibody was used to detect the antibody. Lane 1: Rabbit stomach. Predicted band size: 42kDa. Observed band size: 42kDa.



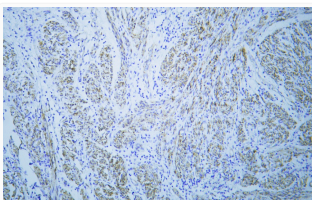
Human appendix tissue was stained with anti-SMA (ABT-SMA) antibody.



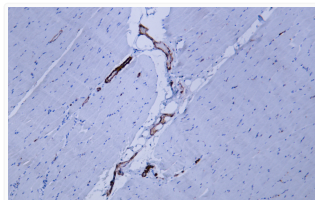
Human cardiac muscle tissue was stained with anti-SMA (ABT-SMA) antibody.



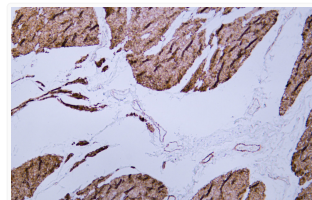
Human colon tissue was stained with anti-SMA (ABT-SMA) antibody.



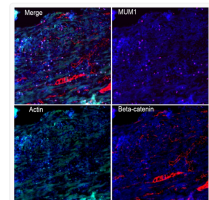
Human leiomyoma tissue was stained with anti-SMA (ABT-SMA) antibody.



Human skeletal muscle tissue was stained with anti-SMA (ABT-SMA) antibody.



Human smooth muscle tissue was stained with anti-SMA (ABT-SMA) antibody.



Fluorescence multiplex immunohistochemical analysis of normal human appendix tissue (formalin-fixed paraffin-embedded section). The section was incubated in 3 rounds of staining; in the order of Actin. (STJ196911 1/200 dilution), Beta-catenin. (STJ197008 1/200 dilution), MUM1. (STJ197046 1/200 dilution), each using a separate fluorescent tyramide signal amplification system. Treble-Fluorescence immunohistochemical mouse/rabbit kit (pH9.0)