

## Anti-TP63 antibody (600-680 aa) [ABT-P63] (STJ196856)

### GENERAL INFORMATION

|               |                    |
|---------------|--------------------|
| Product Type  | Primary antibodies |
| Applications  | IHC/WB             |
| Host / Source | Mouse              |
| Reactivity    | Human/Mouse/Rat    |

### PRODUCT PROPERTIES

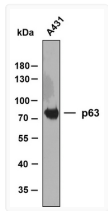
|                     |  |
|---------------------|--|
| Clonality           | Monoclonal   |
| Conjugation         | Unconjugated   |
| Purification        | The antibody was affinity-purified from mouse ascites by affinity-chromatography using specific immunogen. |
| Dilution Range      | IHC-P 1:100-500<br>WB 1:500-2000   |
| Formulation         | Liquid in PBS containing 50% Glycerol, 0.5% BSA and 0.02% Sodium Azide.                                    |
| Isotype             | IgG1k  |
| Molecular Weight    | Calculated: 77kD<br>Observed: 77kD   |
| Storage Instruction | Store at -20°C for up to 1 year from the date of receipt, and avoid repeat freeze-thaw cycles.             |

### TARGET INFORMATION

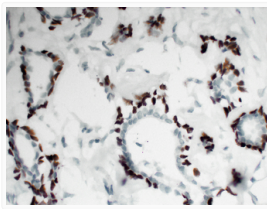
|                  |  |
|------------------|--|
| Gene ID          | <a href="#">8626</a>   |
| Gene Symbol      | <a href="#">TP63</a>   |
| UniProt ID       | <a href="#">P63_HUMAN</a>  |
| Immunogen Region | 600-680 aa   |
| Specificity      | This antibody detects endogenous levels of human p63. Heat-induced epitope retrieval (HIER) TRIS-EDTA of pH8.0 was highly recommended as antigen repair method in paraffin section |

### ADDITIONAL INFORMATION

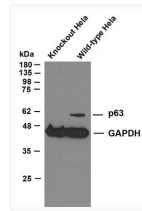
Note **STRICTLY FOR FURTHER SCIENTIFIC RESEARCH USE ONLY (RUO). MUST NOT TO BE USED IN DIAGNOSTIC OR THERAPEUTIC APPLICATIONS.**



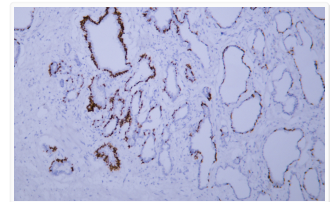
Whole cell lysates of A431 were separated by 8% SDS-PAGE, and the membrane was blotted with anti-p63 antibody. The HRP-conjugated anti-mouse IgG antibody was used to detect the antibody. Predicted band size: 77 kDa



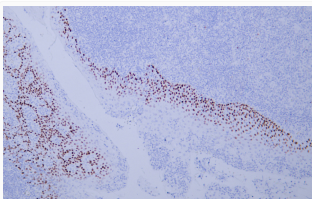
Human breast carcinoma tissue was stained with Anti-p63 (ABT-P63) Antibody



Various whole cell lysates were separated by 10% SDS-PAGE, and the membrane was blotted with anti-p63 and anti-GAPDH antibody. The HRP-conjugated anti-mouse IgG antibody was used to detect the antibody. Lane 1 : P63 knockout HeLa cell lysate Lane 2 : Wild type HeLa cell lysate Predicted band size: 77 kDa Observed band size: 77 kDa



Human prostate tissue was stained with Anti-p63 (ABT-P63) Antibody



Human tonsil tissue was stained with Anti-p63 (ABT-P63) Antibody