

Anti-KRT18 antibody (200-300 aa) [ABT-CK18] (STJ196822)

GENERAL INFORMATION

Product Type	Primary antibodies
Applications	IHC/WB
Host / Source	Mouse
Reactivity	Human/Mouse/Rat

PRODUCT PROPERTIES

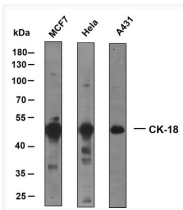
Clonality	Monoclonal
Conjugation	Unconjugated
Purification	The antibody was affinity-purified from mouse ascites by affinity-chromatography using specific immunogen.
Dilution Range	IHC-P 1:100-500 WB 1:500-1000 IF 1:500-200
Formulation	Liquid in PBS containing 50% Glycerol, 0.5% BSA and 0.02% Sodium Azide.
Isotype	IgG2bk
Molecular Weight	Calculated: 48kD Observed: 48kD
Storage Instruction	Store at -20°C for up to 1 year from the date of receipt, and avoid repeat freeze-thaw cycles.

TARGET INFORMATION

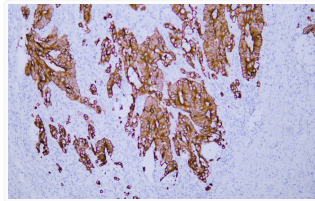
Gene ID	3875
Gene Symbol	KRT18
UniProt ID	K1C18_HUMAN
Immunogen Region	200-300 aa
Specificity	This antibody detects endogenous levels of human Cytokeratin 18. Heat-induced epitope retrieval (HIER) TRIS-EDTA of pH8.0 was highly recommended as antigen repair method in paraffin section

ADDITIONAL INFORMATION

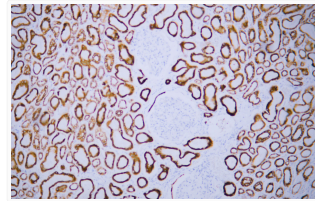
Note **STRICTLY FOR FURTHER SCIENTIFIC RESEARCH USE ONLY (RUO). MUST NOT TO BE USED IN DIAGNOSTIC OR THERAPEUTIC APPLICATIONS.**



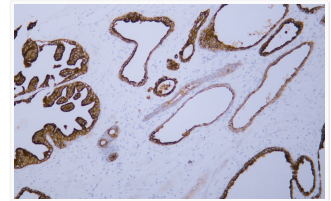
Various whole cell lysates were separated by 10% SDS-PAGE, and the membrane was blotted with anti-CK18 antibody at 1ug/ml. The HRP-conjugated anti-mouse IgG antibody was used to detect the antibody. Predicted band size: 48 kDa



Human colon carcinoma tissue was stained with Anti-Cytokeratin 18 (ABT-CK18) Antibody



Human kidney tissue was stained with Anti-Cytokeratin 18 (ABT-CK18) Antibody



Human prostate tissue was stained with Anti-Cytokeratin 18 (ABT-CK18) Antibody