

Anti-KRT1 antibody (200-300 aa) [ABT-CK1] (STJ196817)

GENERAL INFORMATION

Product Type	Primary antibodies
Applications	IHC/IF
Host / Source	Mouse
Reactivity	Human/Mouse/Rat

PRODUCT PROPERTIES

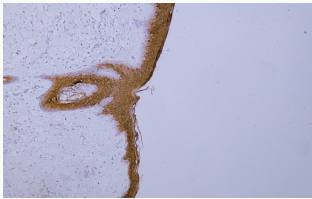
Clonality	Monoclonal
Conjugation	Unconjugated
Purification	The antibody was affinity-purified from mouse ascites by affinity-chromatography using specific immunogen.
Dilution Range	IHC-P 1:100-500 IF 1:50-200
Formulation	Liquid in PBS containing 50% Glycerol, 0.5% BSA and 0.02% Sodium Azide.
Isotype	IgG1k
Molecular Weight	Calculated: 66kD
Storage Instruction	Store at -20°C for up to 1 year from the date of receipt, and avoid repeat freeze-thaw cycles.

TARGET INFORMATION

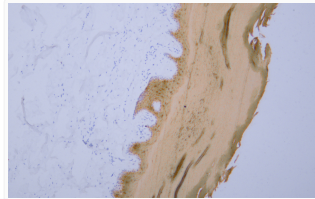
Gene ID	3848
Gene Symbol	KRT1
UniProt ID	K2C1_HUMAN
Immunogen Region	200-300 aa
Specificity	This antibody detects endogenous levels of human Cytokeratin 1. Heat-induced epitope retrieval (HIER) Citrate buffer of pH6.0 was highly recommended as antigen repair method in paraffin section. The a

ADDITIONAL INFORMATION

Note STRICTLY FOR FURTHER SCIENTIFIC RESEARCH USE ONLY (RUO). MUST NOT TO BE USED IN DIAGNOSTIC OR THERAPEUTIC APPLICATIONS.



Human skin tissue was stained with Anti-Cytokeratin 1 (ABT-CK1) Antibody



Human skin tissue was stained with Anti-Cytokeratin 1 (ABT-CK1) Antibody