

## Anti-SPN antibody (300-400 aa) [ABT-CD43] (STJ196811)

### GENERAL INFORMATION

Product Type	Primary antibodies
Applications	IHC/WB/IF
Host / Source	Mouse
Reactivity	Human

### PRODUCT PROPERTIES

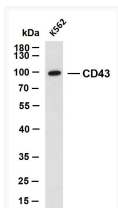
Clonality	Monoclonal
Conjugation	Unconjugated
Purification	The antibody was affinity-purified from mouse ascites by affinity-chromatography using specific immunogen.
Dilution Range	IHC-P 1:100-500 WB 1:200-1000 IF 1:50-200
Formulation	Liquid in PBS containing 50% Glycerol, 0.5% BSA and 0.02% Sodium Azide.
Isotype	IgG1k
Molecular Weight	Calculated: 40kD Observed: 90kD
Storage Instruction	Store at -20°C for up to 1 year from the date of receipt, and avoid repeat freeze-thaw cycles.

### TARGET INFORMATION

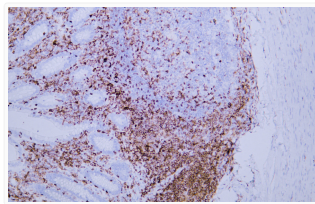
Gene ID	<a href="#">6693</a>
Gene Symbol	<a href="#">SPN</a>
UniProt ID	<a href="#">LEUK_HUMAN</a>
Immunogen Region	300-400 aa
Specificity	This antibody detects endogenous levels of human CD43. Heat-induced epitope retrieval (HIER) Citrate buffer of pH6.0 was highly recommended as antigen repair method in paraffin section

### ADDITIONAL INFORMATION

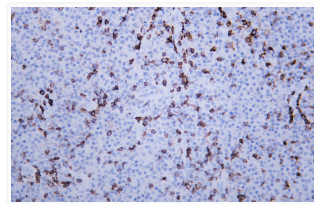
Note STRICTLY FOR FURTHER SCIENTIFIC RESEARCH USE ONLY (RUO). MUST NOT TO BE USED IN DIAGNOSTIC OR THERAPEUTIC APPLICATIONS.



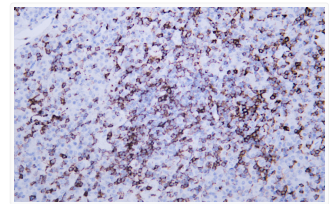
K562 whole cell lysates were separated by 10% SDS-PAGE, and the membrane was blotted with anti-CD43 (ABT-CD43) antibody. The HRP-conjugated Goat anti-mouse IgG (H + L) antibody was used to detect the antibody. Lane 1: K562 Predicted band size: 40kDa Observed band size: 90kDa



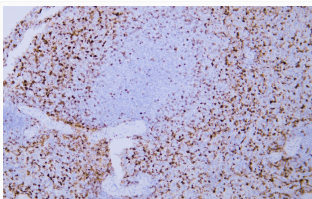
Human appendix tissue was stained with Anti-CD43 (ABT-CD43) Antibody



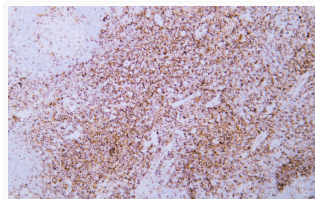
Human lymphoma tissue was stained with Anti-CD43 (ABT-CD43) Antibody



Human lymphoma tissue was stained with Anti-CD43 (ABT-CD43) Antibody



Human spleen tissue was stained with Anti-CD43 (ABT-CD43) Antibody



Human tonsil tissue was stained with Anti-CD43 (ABT-CD43) Antibody