

Anti-Actin, Muscle Specific antibody (2-50 aa) [ABT-MSA] (STJ196800)

GENERAL INFORMATION

Product Type	Primary antibodies
Applications	IHC/WB/IF
Host / Source	Mouse
Reactivity	Human/Mouse/Rat

PRODUCT PROPERTIES

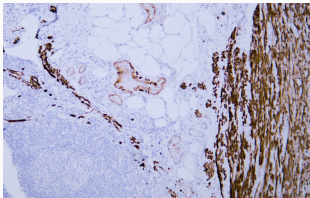
Clonality	Monoclonal
Conjugation	Unconjugated
Purification	The antibody was affinity-purified from mouse ascites by affinity-chromatography using specific immunogen.
Dilution Range	IHC-P 1:100-500 WB 1:200-1000 IF 1:50-200
Formulation	Liquid in PBS containing 50% Glycerol, 0.5% BSA and 0.02% Sodium Azide.
Isotype	IgG1k
Molecular Weight	Observed: 42kD
Storage Instruction	Store at -20°C for up to 1 year from the date of receipt, and avoid repeat freeze-thaw cycles.

TARGET INFORMATION

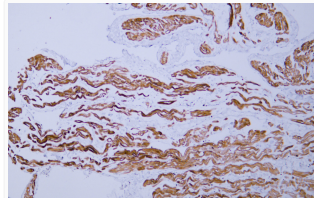
Gene ID	72 58 70 ACTG2 ACTA1 ACTH_HUMAN ACTS_HUMAN ACTC_HUMAN
Immunogen Region	2-50 aa
Specificity	This antibody detects endogenous levels of human Actin, Muscle Specific. Heat-induced epitope retrieval (HIER) Citrate buffer of pH6.0 was highly recommended as antigen repair method in paraffin secti

ADDITIONAL INFORMATION

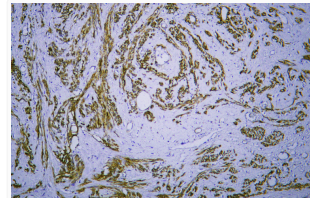
Note STRICTLY FOR FURTHER SCIENTIFIC RESEARCH USE ONLY (RUO). MUST NOT TO BE USED IN DIAGNOSTIC OR THERAPEUTIC APPLICATIONS.



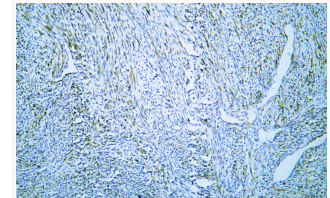
Human appendix tissue was stained with anti-MSA (ABT-MSA) antibody.



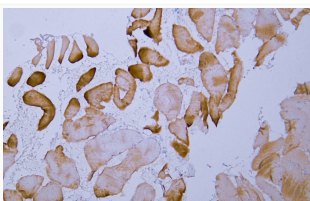
Human cardiac muscle tissue was stained with anti-MSA (ABT-MSA) antibody.



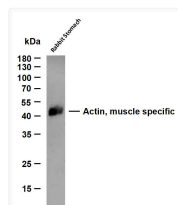
Human leiomyoma tissue was stained with anti-MSA (ABT-MSA) antibody.



Human rhabdomyosarcoma tissue was stained with anti-MSA (ABT-MSA) antibody.



Human skeletal muscle tissue was stained with anti-MSA (ABT-MSA) antibody.



Whole cell lysates were separated by 10% SDS-PAGE, and the membrane was blotted with anti-Actin, muscle specific (ABT-MSA) antibody. The HRP-conjugated Goat anti-mouse IgG (H + L) antibody was used to detect the antibody. Lane 1: Rabbit Stomach Predicted band size: 42kDa Observed band size: 42kDa