

Anti-EPCAM antibody (100-200 aa) [ABT-EPCAM] (STJ196761)

GENERAL INFORMATION

Product Type	Primary antibodies
Applications	WB/IHC/IF
Host / Source	Mouse
Reactivity	Human

PRODUCT PROPERTIES

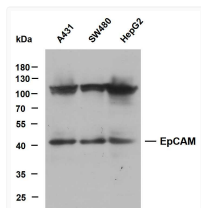
Clonality	Monoclonal
Conjugation	Unconjugated
Purification	The antibody was affinity-purified from mouse ascites by affinity-chromatography using specific immunogen.
Dilution Range	IHC-P 1:100-500 WB 1:100-2000 IF 1:50-200
Formulation	Liquid in PBS containing 50% Glycerol, 0.5% BSA and 0.02% Sodium Azide.
Isotype	IgG2bk
Molecular Weight	Calculated: 35kD Observed: 42kD
Storage Instruction	Store at -20°C for up to 1 year from the date of receipt, and avoid repeat freeze-thaw cycles.

TARGET INFORMATION

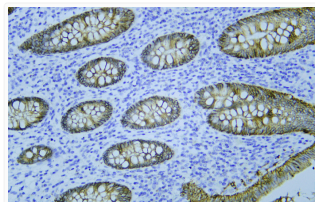
Gene ID	4072
Gene Symbol	EPCAM
UniProt ID	EPCAM_HUMAN
Immunogen Region	100-200 aa
Specificity	This antibody detects endogenous levels of human Ep-CAM. Heat-induced epitope retrieval (HIER) Citrate buffer of pH6.0 was highly recommended as antigen repair method in paraffin section

ADDITIONAL INFORMATION

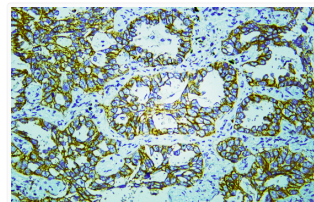
Note STRICTLY FOR FURTHER SCIENTIFIC RESEARCH USE ONLY (RUO). MUST NOT TO BE USED IN DIAGNOSTIC OR THERAPEUTIC APPLICATIONS.



Western Blot (WB): Various whole cell lysates were separated by 10% SDS-PAGE, and the membrane was blotted with STJ196761



Immunohistochemistry - Paraffin (IHC-P): Human appendix tissue was stained with Anti-EpCAM (ABT-EPCAM) antibody. STJ196761



Immunohistochemistry - Paraffin (IHC-P): Human lung adenocarcinoma tissue was stained with Anti-EpCAM (ABT-EPCAM) STJ196761