

## Anti-CEACAM5 antibody (600-702 aa) [ABT-CEA] (STJ196753)

### GENERAL INFORMATION

Product Type	Primary antibodies
Applications	IHC/WB/IF
Host / Source	Mouse
Reactivity	Human

### PRODUCT PROPERTIES

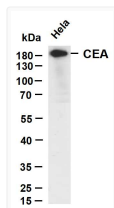
Clonality	Monoclonal
Conjugation	Unconjugated
Purification	The antibody was affinity-purified from mouse ascites by affinity-chromatography using specific immunogen.
Dilution Range	IHC-P 1:100-500 WB 1:200-1000 IF 1:50-200
Formulation	Liquid in PBS containing 50% Glycerol, 0.5% BSA and 0.02% Sodium Azide.
Isotype	IgG2bk
Molecular Weight	Calculated: 76kD Observed: 200kD
Storage Instruction	Store at -20°C for up to 1 year from the date of receipt, and avoid repeat freeze-thaw cycles.

### TARGET INFORMATION

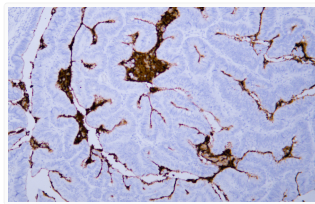
Gene ID	<a href="#">1048</a>
Gene Symbol	<a href="#">CEACAM5</a>
UniProt ID	<a href="#">CEAM5_HUMAN</a>
Immunogen Region	600-702 aa
Specificity	This antibody detects endogenous levels of human carcinoembryonic antigen (CEA). Antibody is negative with no cross reaction to BGP or NCA. Heat-induced epitope retrieval (HIER) TRIS-EDTA of pH8.0 was

### ADDITIONAL INFORMATION

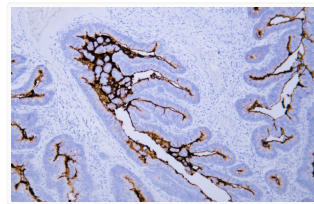
Note STRICTLY FOR FURTHER SCIENTIFIC RESEARCH USE ONLY (RUO). MUST NOT TO BE USED IN DIAGNOSTIC OR THERAPEUTIC APPLICATIONS.



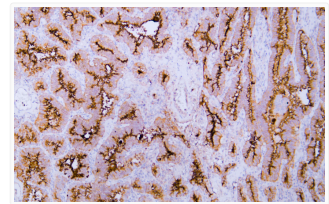
HeLa whole cell lysates were separated by 10% SDS-PAGE, and the membrane was blotted with anti-CEA (ABT-CEA) antibody. The HRP-conjugated Goat anti-mouse IgG (H + L) antibody was used to detect the antibody. Lane 1: HeLa Predicted band size: 76kDa Observed band size: 200kDa



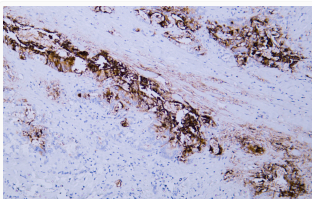
Human colon carcinoma tissue was stained with anti-CEA (ABT-CEA) antibody.



Human colon carcinoma tissue was stained with anti-CEA (ABT-CEA) antibody.



Human lung adenocarcinoma tissue was stained with anti-CEA (ABT-CEA) antibody.



Human pancreatic adenocarcinoma tissue was stained with anti-CEA (ABT-CEA) antibody.