

Anti-KRT7 antibody (350-469 aa) [ABT319] (STJ196724)

GENERAL INFORMATION

Product Type	Primary antibodies
Applications	IHC/WB
Host / Source	Mouse
Reactivity	Human

PRODUCT PROPERTIES

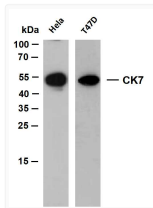
Clonality	Monoclonal
Conjugation	Unconjugated
Purification	The antibody was affinity-purified from mouse ascites by affinity-chromatography using specific immunogen.
Dilution Range	IHC-P 1:200-400 WB 500-1000
Formulation	Liquid in PBS pH7.2, 0.03% Proclin 300, with stabilizing protein.
Isotype	IgG1k
Molecular Weight	Calculated: 51kD Observed: 51kD
Storage Instruction	Store at -20°C for up to 1 year from the date of receipt, and avoid repeat freeze-thaw cycles.

TARGET INFORMATION

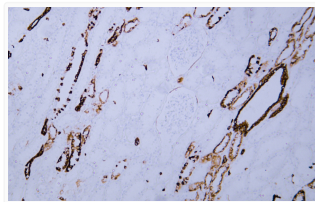
Gene ID	3855
Gene Symbol	KRT7
UniProt ID	K2C7_HUMAN
Immunogen Region	350-469 aa
Specificity	The antibody can specifically recognize human CK7 protein, and shows no cross reaction with CK1, 4, 5, 6, 8, 10, 14, 17, 18, 19, 20. In western blotting of HeLa, A431, A549 and HeLa cell lysates, the

ADDITIONAL INFORMATION

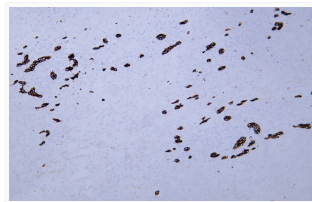
Note **STRICTLY FOR FURTHER SCIENTIFIC RESEARCH USE ONLY (RUO). MUST NOT TO BE USED IN DIAGNOSTIC OR THERAPEUTIC APPLICATIONS.**



Various whole cell lysates were separated by 12% SDS-PAGE, and the membrane was blotted with anti-CK7 (ABT319) antibody. The HRP-conjugated Goat anti-mouse IgG (H + L) antibody was used to detect the antibody. Lane 1: HeLa Lane 2: T47D Predicted band size: 51kDa Observed band size: 51kDa



Human kidney tissue was stained with Anti-Cytokeratin 7 (ABT319) Antibody



Human liver tissue was stained with Anti-Cytokeratin 7 (ABT319) Antibody