

Anti-INS antibody (25-110 aa) [PT0156] (STJ196713)

GENERAL INFORMATION

Product Type	Primary antibodies
Applications	IHC/WB/IF
Host / Source	Mouse
Reactivity	Human/Mouse/Rat

PRODUCT PROPERTIES

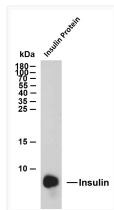
Clonality	Monoclonal
Conjugation	Unconjugated
Purification	The antibody was affinity-purified from mouse ascites by affinity-chromatography using specific immunogen.
Dilution Range	IHC-P 1:100-500 WB 1:200-1000 IF 1:100-500
Formulation	Liquid in PBS containing 50% Glycerol, 0.5% BSA and 0.02% Sodium Azide.
Molecular Weight	Calculated: 12kD Observed: 9kD
Storage Instruction	Store at -20°C for up to 1 year from the date of receipt, and avoid repeat freeze-thaw cycles.

TARGET INFORMATION

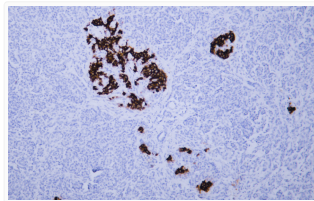
Gene ID	3630
Gene Symbol	INS
UniProt ID	INS_HUMAN
Immunogen Region	25-110 aa
Specificity	This antibody detects endogenous levels of Insulin at Human

ADDITIONAL INFORMATION

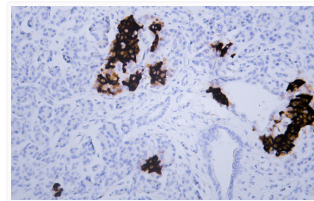
Note STRICTLY FOR FURTHER SCIENTIFIC RESEARCH USE ONLY (RUO). MUST NOT TO BE USED IN DIAGNOSTIC OR THERAPEUTIC APPLICATIONS.



Whole cell lysates were separated by 15% SDS-PAGE, and the membrane was blotted with anti-Insulin (ABT340) antibody. The HRP-conjugated Goat anti- mouse IgG (H + L) antibody was used to detect the antibody. Lane 1: Insulin recombinant protein. Predicted band size: 12kDa. Observed band size: 9kDa.



Human pancreas tissue was stained with Anti-Insulin (ABT340) Antibody



Human pancreas tissue was stained with Anti-Insulin (ABT340) Antibody