

Anti-Phospho-ROS1-Tyr2274 antibody (STJ196404)

GENERAL INFORMATION

Product Type	Primary antibodies
Applications	WB/IF
Host / Source	Rabbit
Reactivity	Human/Rat/Mouse

PRODUCT PROPERTIES

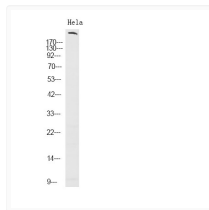
Clonality	Polyclonal
Concentration	1 mg/mL
Conjugation	Unconjugated
Purification	The antibody was affinity-purified from rabbit serum by affinity-chromatography using specific immunogen.
Dilution Range	WB 1:1000-2000 IF 1:50-200
Formulation	Liquid in PBS containing 50% Glycerol, 0.5% BSA and 0.02% Sodium Azide.
Isotype	IgG
Molecular Weight	Observed: 258kD
Storage Instruction	Store at -20°C for up to 1 year from the date of receipt, and avoid repeat freeze-thaw cycles.

TARGET INFORMATION

Gene ID	6098
Gene Symbol	ROS1
UniProt ID	ROS1_HUMAN
Specificity	This antibody detects endogenous levels of Human ROS1 (phospho-Tyr2274)

ADDITIONAL INFORMATION

Note STRICTLY FOR FURTHER SCIENTIFIC RESEARCH USE ONLY (RUO). MUST NOT TO BE USED IN DIAGNOSTIC OR THERAPEUTIC APPLICATIONS.



Western Blot analysis of HeLa using primary antibody at 1:1000 dilution 4°C, overnight. Secondary antibody (STJS000791) was diluted at 1:10000 25°C, 1.5 hours