

Anti-Phospho-RPS6KB1-Thr389 antibody (STJ196372)

GENERAL INFORMATION

Product Type	Primary antibodies
Applications	WB
Host / Source	Rabbit
Reactivity	Human/Mouse/Rat/Cow

PRODUCT PROPERTIES

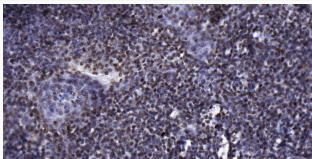
Clonality	Polyclonal
Concentration	1 mg/mL
Conjugation	Unconjugated
Purification	The antibody was affinity-purified from rabbit serum by affinity-chromatography using specific immunogen.
Dilution Range	WB 1:1000-2000
Formulation	Liquid in PBS containing 50% Glycerol, 0.5% BSA and 0.02% Sodium Azide.
Isotype	IgG
Molecular Weight	Observed: 59kD
Storage Instruction	Store at -20°C for up to 1 year from the date of receipt, and avoid repeat freeze-thaw cycles.

TARGET INFORMATION

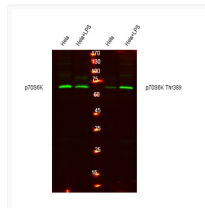
Gene ID	6198
Gene Symbol	RPS6KB1
UniProt ID	KS6B1_HUMAN
Specificity	This antibody detects endogenous levels of Human Mouse Rat p70 S6 Kinase (phospho-Thr389)

ADDITIONAL INFORMATION

Note **STRICTLY FOR FURTHER SCIENTIFIC RESEARCH USE ONLY (RUO). MUST NOT TO BE USED IN DIAGNOSTIC OR THERAPEUTIC APPLICATIONS.**



Immunohistochemical analysis of paraffin-embedded human tonsil. 1, Antibody was diluted at 1:200 (4°C overnight). 2, Tris-EDTA, pH9.0 was used for antigen retrieval. 3, Secondary antibody was diluted at 1:200 (room temperature, 30min).



Western blot analysis of lysates from HeLa cells, treated with LPS 100ng/ml 30', using total P70 S6 Kinase Antibody (STJ94920) and P70 S6 Kinase (phospho T389) antibody (STJ196372). (Green) primary antibody was diluted at 1:1000, 4°C overnight, secondary antibody (STJS000791) was diluted at 1:10000, 37° 1hour.