

Anti-Phospho-DNM1L-Ser616 antibody (STJ196288)

GENERAL INFORMATION

Product Type	Primary antibodies
Applications	WB
Host / Source	Rabbit
Reactivity	Human/Mouse/Rat

PRODUCT PROPERTIES

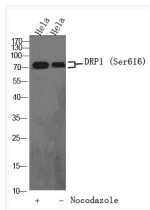
Clonality	Polyclonal
Concentration	1 mg/mL
Conjugation	Unconjugated
Purification	The antibody was affinity-purified from rabbit serum by affinity-chromatography using specific immunogen.
Dilution Range	WB 1:1000-2000
Formulation	Liquid in PBS containing 50% Glycerol, 0.5% BSA and 0.02% Sodium Azide.
Isotype	IgG
Molecular Weight	Observed: 80kD
Storage Instruction	Store at -20°C for up to 1 year from the date of receipt, and avoid repeat freeze-thaw cycles.

TARGET INFORMATION

Gene ID	10059
Gene Symbol	DNM1L
UniProt ID	DNM1L_HUMAN
Specificity	Phospho-DRP1 (S616) Polyclonal Antibody detects endogenous levels of DRP1 protein only when phosphorylated at S616 (human) , S622 (mouse) , S635 (rat)

ADDITIONAL INFORMATION

Note STRICTLY FOR FURTHER SCIENTIFIC RESEARCH USE ONLY (RUO). MUST NOT TO BE USED IN DIAGNOSTIC OR THERAPEUTIC APPLICATIONS.



Western Blot analysis of HeLa cells, HeLa cells treated or untreated by Nocodazole at 100 ng/ml 17h. primary Antibody was diluted at 1:1000. Secondary antibody (catalog#:STJS000791) was diluted at 1:10000