

## Anti-ID2B antibody (1-24 aa) (STJ196211)

### GENERAL INFORMATION

|               |                    |
|---------------|--------------------|
| Product Type  | Primary antibodies |
| Applications  | IHC/IF             |
| Host / Source | Rabbit             |
| Reactivity    | Human/Rat/Mouse    |

### PRODUCT PROPERTIES

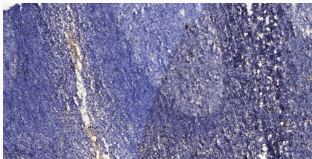
|                     |   |
|---------------------|---|
| Clonality           | Polyclonal  |
| Concentration       | 1 mg/mL   |
| Conjugation         | Unconjugated  |
| Purification        | The antibody was affinity-purified from rabbit antiserum by affinity-chromatography using epitope-specific immunogen. |
| Dilution Range      | IHC-P 1:50-200<br>IF 1:50-200   |
| Formulation         | Liquid in PBS containing 50% Glycerol, 0.5% BSA and 0.02% Sodium Azide.   |
| Isotype             | IgG   |
| Molecular Weight    | Calculated: 4kD   |
| Storage Instruction | Store at -20°C for up to 1 year from the date of receipt, and avoid repeat freeze-thaw cycles.                        |

### TARGET INFORMATION

|                  |   |
|------------------|---|
| Gene Symbol      | <a href="#">ID2B</a> Uniprot ID= <a href="#">ID2B_HUMAN</a> " |
| Immunogen Region | 1-24 aa   |
| Specificity      | This antibody detects endogenous levels of ID2B at Human      |

### ADDITIONAL INFORMATION

|      |   |
|------|---|
| Note | STRICTLY FOR FURTHER SCIENTIFIC RESEARCH USE ONLY (RUO). MUST NOT TO BE USED IN DIAGNOSTIC OR THERAPEUTIC APPLICATIONS. |
|------|---|



Immunohistochemical analysis of paraffin-embedded human tonsil. 1, Antibody was diluted at 1:200 (4°C overnight). 2, Tris-EDTA, pH9.0 was used for antigen retrieval. 3, Secondary antibody was diluted at 1:200 (room temperature, 30min).