

## Anti-ERCC1 antibody (1-100 aa) (STJ196164)

### GENERAL INFORMATION

Product Type	Primary antibodies
Applications	WB/IF/IHC
Host / Source	Mouse
Reactivity	Human

### PRODUCT PROPERTIES

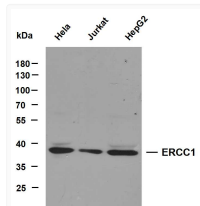
Clonality	Monoclonal
Conjugation	Unconjugated
Purification	The antibody was affinity-purified from mouse ascites by affinity-chromatography using specific immunogen.
Dilution Range	WB 1:500-2000 IHC 1:100-300 IF 1:100-300
Formulation	Liquid in PBS containing 50% Glycerol, 0.5% BSA and 0.02% Sodium Azide.
Isotype	IgG1k
Molecular Weight	Calculated: 33kD Observed: 33kD
Storage Instruction	Store at -20°C for up to 1 year from the date of receipt, and avoid repeat freeze-thaw cycles.

### TARGET INFORMATION

Gene ID	<a href="#">2067</a>
Gene Symbol	<a href="#">ERCC1</a>
UniProt ID	<a href="#">ERCC1_HUMAN</a>
Immunogen Region	1-100 aa
Specificity	This antibody detects endogenous levels of human ERCC1

### ADDITIONAL INFORMATION

Note **STRICTLY FOR FURTHER SCIENTIFIC RESEARCH USE ONLY (RUO). MUST NOT TO BE USED IN DIAGNOSTIC OR THERAPEUTIC APPLICATIONS.**



Various whole cell lysates were separated by 10% SDS-PAGE, and the membrane was blotted with anti-ERCC1 (PT0756) antibody. The HRP-conjugated anti-mouse IgG antibody was used to detect the antibody. Lane 1: HeLa Lane 2: Jurkat Lane 3: HepG2 Predicted band size: 33kDa Observed band size: 33kDa