

## Anti-NLRP12 antibody (456-506 aa) (STJ195951)

### GENERAL INFORMATION

Product Type	Primary antibodies
Applications	WB/ELISA/IHC
Host / Source	Rabbit
Reactivity	Human/Mouse

### PRODUCT PROPERTIES

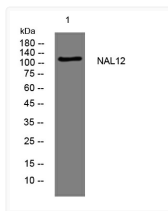
Clonality	Polyclonal
Concentration	1 mg/mL
Conjugation	Unconjugated
Purification	The antibody was affinity-purified from rabbit antiserum by affinity-chromatography using epitope-specific immunogen.
Dilution Range	WB 1:500-2000 IHC-P 1:50-300 ELISA 2000-20000
Formulation	Liquid in PBS containing 50% Glycerol, 0.5% BSA and 0.02% Sodium Azide.
Isotype	IgG
Molecular Weight	Calculated: 117kD
Storage Instruction	Store at -20°C for up to 1 year from the date of receipt, and avoid repeat freeze-thaw cycles.

### TARGET INFORMATION

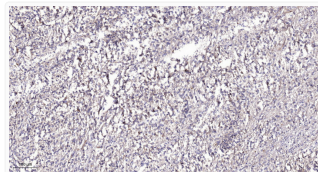
Gene ID	<a href="#">91662</a>
Gene Symbol	<a href="#">NLRP12</a>
UniProt ID	<a href="#">NAL12_HUMAN</a>
Immunogen Region	456-506 aa
Specificity	This antibody detects endogenous levels of NAL12 at Human/Mouse

### ADDITIONAL INFORMATION

Note STRICTLY FOR FURTHER SCIENTIFIC RESEARCH USE ONLY (RUO). MUST NOT TO BE USED IN DIAGNOSTIC OR THERAPEUTIC APPLICATIONS.



Western blot analysis of lysates from VEC cells, primary antibody was diluted at 1:1000, 4°C overnight STJ195951



Immunohistochemical analysis of paraffin-embedded human colon cancer. 1, Antibody was diluted at 1:200 (4° overnight). STJ195951