

Anti-CARMIL1 antibody (853-903 aa) (STJ195878)

GENERAL INFORMATION

Product Type	Primary antibodies
Applications	WB/IHC
Host / Source	Rabbit
Reactivity	Human/Mouse

PRODUCT PROPERTIES

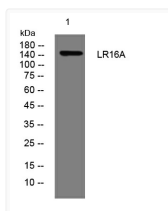
Clonality	Polyclonal
Concentration	1 mg/mL
Conjugation	Unconjugated
Purification	The antibody was affinity-purified from rabbit antiserum by affinity-chromatography using epitope-specific immunogen.
Dilution Range	WB 1:500-2000 IHC-P 1:50-300
Formulation	Liquid in PBS containing 50% Glycerol, 0.5% BSA and 0.02% Sodium Azide.
Isotype	IgG
Molecular Weight	Calculated: 151kD
Storage Instruction	Store at -20°C for up to 1 year from the date of receipt, and avoid repeat freeze-thaw cycles.

TARGET INFORMATION

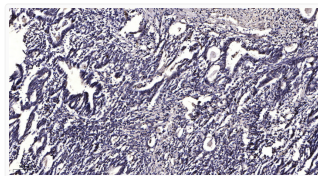
Gene ID	55604
Gene Symbol	CARMIL1
UniProt ID	CARL1_HUMAN
Immunogen Region	853-903 aa
Specificity	This antibody detects endogenous levels of LR16A at Human/Mouse

ADDITIONAL INFORMATION

Note **STRICTLY FOR FURTHER SCIENTIFIC RESEARCH USE ONLY (RUO). MUST NOT TO BE USED IN DIAGNOSTIC OR THERAPEUTIC APPLICATIONS.**



Western blot analysis of lysates from U2OS cells, primary antibody was diluted at 1:1000, 4° overnight STJ195878



Immunohistochemical analysis of paraffin-embedded human gastric adenocarcinoma. 1, Antibody was diluted at 1:200 (4°C STJ195878