

Anti-ALDH1L2 antibody (74-124 aa) (STJ195651)

GENERAL INFORMATION

| | |
|---------------|--------------------|
| Product Type | Primary antibodies |
| Applications | WB |
| Host / Source | Rabbit |
| Reactivity | Human/Mouse |

PRODUCT PROPERTIES

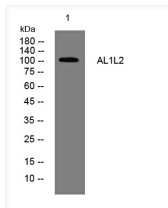
| | |
|---------------------|---|
| Clonality | Polyclonal |
| Concentration | 1 mg/mL |
| Conjugation | Unconjugated |
| Purification | The antibody was affinity-purified from rabbit antiserum by affinity-chromatography using epitope-specific immunogen. |
| Dilution Range | WB 1:500-2000 |
| Formulation | Liquid in PBS containing 50% Glycerol, 0.5% BSA and 0.02% Sodium Azide. |
| Isotype | IgG |
| Molecular Weight | Calculated: 102kD |
| Storage Instruction | Store at -20°C for up to 1 year from the date of receipt, and avoid repeat freeze-thaw cycles. |

TARGET INFORMATION

| | |
|------------------|---|
| Gene ID | 160428 |
| Gene Symbol | ALDH1L2 |
| UniProt ID | AL1L2_HUMAN |
| Immunogen Region | 74-124 aa |
| Specificity | This antibody detects endogenous levels of AL1L2 at Human/Mouse |

ADDITIONAL INFORMATION

Note STRICTLY FOR FURTHER SCIENTIFIC RESEARCH USE ONLY (RUO). MUST NOT TO BE USED IN DIAGNOSTIC OR THERAPEUTIC APPLICATIONS.



Western blot analysis of lysates from Jarkat cells, primary antibody was diluted at 1:1000, 4°C over night