

Anti-ISOC1 antibody (193-243 aa) (STJ195375)

GENERAL INFORMATION

Product Type	Primary antibodies
Applications	WB/ELISA/IHC
Host / Source	Rabbit
Reactivity	Human/Mouse/Rat

PRODUCT PROPERTIES

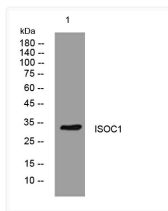
Clonality	Polyclonal
Concentration	1 mg/mL
Conjugation	Unconjugated
Purification	The antibody was affinity-purified from rabbit antiserum by affinity-chromatography using epitope-specific immunogen.
Dilution Range	WB 1:500-2000 IHC-P 1:50-300 ELISA 2000-20000
Formulation	Liquid in PBS containing 50% Glycerol, 0.5% BSA and 0.02% Sodium Azide.
Isotype	IgG
Molecular Weight	Calculated: 33kD
Storage Instruction	Store at -20°C for up to 1 year from the date of receipt, and avoid repeat freeze-thaw cycles.

TARGET INFORMATION

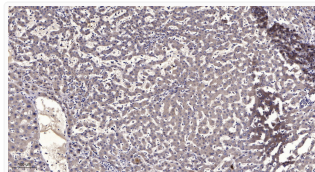
Gene ID	51015
Gene Symbol	ISOC1
UniProt ID	ISOC1_HUMAN
Immunogen Region	193-243 aa
Specificity	This antibody detects endogenous levels of ISOC1 at Human/Mouse/Rat

ADDITIONAL INFORMATION

Note STRICTLY FOR FURTHER SCIENTIFIC RESEARCH USE ONLY (RUO). MUST NOT TO BE USED IN DIAGNOSTIC OR THERAPEUTIC APPLICATIONS.



Western blot analysis of lysates from CACO2 cells, primary antibody was diluted at 1:1000, 4° overnight STJ195375



Immunohistochemical analysis of paraffin-embedded human liver cancer. 1, Antibody was diluted at 1:200 (4° overnight). STJ195375