

Anti-SEC22C antibody (130-180 aa) (STJ195371)

GENERAL INFORMATION

Product Type	Primary antibodies
Applications	WB/IF/ELISA/IHC
Host / Source	Rabbit
Reactivity	Human/Mouse

PRODUCT PROPERTIES

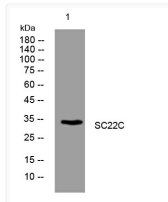
Clonality	Polyclonal
Concentration	1 mg/mL
Conjugation	Unconjugated
Purification	The antibody was affinity-purified from rabbit antiserum by affinity-chromatography using epitope-specific immunogen.
Dilution Range	WB 1:500-2000 IF ICC 1:50-200 ELISA 1:2000-20000 IHC-P 1:50-200
Formulation	Liquid in PBS containing 50% Glycerol, 0.5% BSA and 0.02% Sodium Azide.
Isotype	IgG
Molecular Weight	Calculated: 33kD
Storage Instruction	Store at -20°C for up to 1 year from the date of receipt, and avoid repeat freeze-thaw cycles.

TARGET INFORMATION

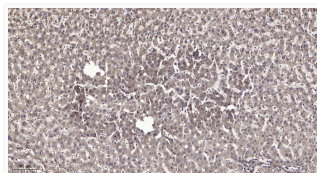
Gene ID	9117
Gene Symbol	SEC22C
UniProt ID	SC22C_HUMAN
Immunogen Region	130-180 aa
Specificity	This antibody detects endogenous levels of SC22C at Human/Mouse

ADDITIONAL INFORMATION

Note STRICTLY FOR FURTHER SCIENTIFIC RESEARCH USE ONLY (RUO). MUST NOT TO BE USED IN DIAGNOSTIC OR THERAPEUTIC APPLICATIONS.



Western blot analysis of lysates from MDA-MB cells, primary antibody was diluted at 1:1000, 4° overnight STJ195371



Immunohistochemical analysis of paraffin-embedded human liver cancer. 1, Antibody was diluted at 1:200 (4° overnight). STJ195371