

Anti-RPH3AL antibody (162-212 aa) (STJ195337)

GENERAL INFORMATION

Product Type	Primary antibodies
Applications	WB
Host / Source	Rabbit
Reactivity	Human/Mouse/Rat

PRODUCT PROPERTIES

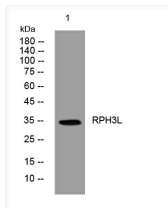
Clonality	Polyclonal
Concentration	1 mg/mL
Conjugation	Unconjugated
Purification	The antibody was affinity-purified from rabbit antiserum by affinity-chromatography using epitope-specific immunogen.
Dilution Range	WB 1:500-2000
Formulation	Liquid in PBS containing 50% Glycerol, 0.5% BSA and 0.02% Sodium Azide.
Isotype	IgG
Molecular Weight	Calculated: 35kD
Storage Instruction	Store at -20°C for up to 1 year from the date of receipt, and avoid repeat freeze-thaw cycles.

TARGET INFORMATION

Gene ID	9501
Gene Symbol	RPH3AL
UniProt ID	RPH3L_HUMAN
Immunogen Region	162-212 aa
Specificity	This antibody detects endogenous levels of RPH3L at Human/Mouse/Rat

ADDITIONAL INFORMATION

Note STRICTLY FOR FURTHER SCIENTIFIC RESEARCH USE ONLY (RUO). MUST NOT TO BE USED IN DIAGNOSTIC OR THERAPEUTIC APPLICATIONS.



Western blot analysis of lysates from SW480 cells, primary antibody was diluted at 1:1000, 4°C over night