

Anti-INAFM1 antibody (92-142 aa) (STJ195334)

GENERAL INFORMATION

Product Type	Primary antibodies
Applications	WB/IF/ELISA/IHC
Host / Source	Rabbit
Reactivity	Human/Rat/Mouse

PRODUCT PROPERTIES

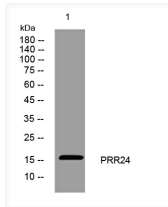
Clonality	Polyclonal
Concentration	1 mg/mL
Conjugation	Unconjugated
Purification	The antibody was affinity-purified from rabbit antiserum by affinity-chromatography using epitope-specific immunogen.
Dilution Range	WB 1:500-2000 IF ICC 1:50-200 ELISA 1:2000-20000 IHC-P 1:50-200
Formulation	Liquid in PBS containing 50% Glycerol, 0.5% BSA and 0.02% Sodium Azide.
Isotype	IgG
Molecular Weight	Calculated: 16kD
Storage Instruction	Store at -20°C for up to 1 year from the date of receipt, and avoid repeat freeze-thaw cycles.

TARGET INFORMATION

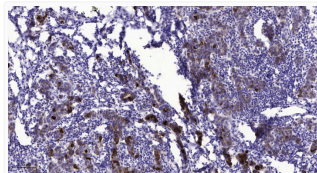
Gene ID	255783
Gene Symbol	INAFM1
UniProt ID	INAM1_HUMAN
Immunogen Region	92-142 aa
Specificity	This antibody detects endogenous levels of PRR24 at Human

ADDITIONAL INFORMATION

Note STRICTLY FOR FURTHER SCIENTIFIC RESEARCH USE ONLY (RUO). MUST NOT TO BE USED IN DIAGNOSTIC OR THERAPEUTIC APPLICATIONS.



Western blot analysis of lysates from SW480 cells, primary antibody was diluted at 1:1000, 4°C overnight STJ195334



Immunohistochemical analysis of paraffin-embedded human breast cancer. 1, Antibody was diluted at 1:200 (4° overnight). STJ195334