

Anti-KMO antibody (413-463 aa) (STJ195067)

GENERAL INFORMATION

Product Type	Primary antibodies
Applications	WB/ELISA/IHC
Host / Source	Rabbit
Reactivity	Human/Mouse/Rat

PRODUCT PROPERTIES

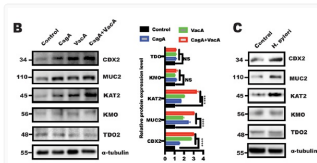
Clonality	Polyclonal
Concentration	1 mg/mL
Conjugation	Unconjugated
Purification	The antibody was affinity-purified from rabbit antiserum by affinity-chromatography using epitope-specific immunogen.
Dilution Range	WB 1:500-2000 IHC-P 1:50-300 ELISA 2000-20000
Formulation	Liquid in PBS containing 50% Glycerol, 0.5% BSA and 0.02% Sodium Azide.
Isotype	IgG
Molecular Weight	Calculated: 53kD
Storage Instruction	Store at -20°C for up to 1 year from the date of receipt, and avoid repeat freeze-thaw cycles.

TARGET INFORMATION

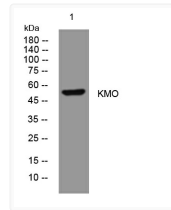
Gene ID	8564
Gene Symbol	KMO
UniProt ID	KMO_HUMAN
Immunogen Region	413-463 aa
Specificity	This antibody detects endogenous levels of KMO at Human/Mouse/Rat

ADDITIONAL INFORMATION

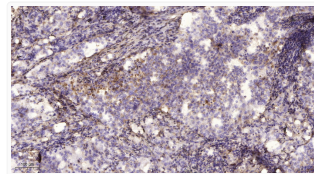
Note STRICTLY FOR FURTHER SCIENTIFIC RESEARCH USE ONLY (RUO). MUST NOT TO BE USED IN DIAGNOSTIC OR THERAPEUTIC APPLICATIONS.



Helicobacter pylori promotes gastric intestinal metaplasia through activation of IRF3-mediated kynurenine pathway. STJ195067



Western blot analysis of lysates from CACO2 cells, primary antibody was diluted at 1:1000, 4°C overnight STJ195067



Immunohistochemical analysis of paraffin-embedded human lung cancer. 1. Antibody was diluted at 1:200 (4°C overnight). STJ195067