

Anti-LIX1L antibody (34-84 aa) (STJ194868)

GENERAL INFORMATION

Product Type	Primary antibodies
Applications	WB/IHC
Host / Source	Rabbit
Reactivity	Human/Mouse/Rat

PRODUCT PROPERTIES

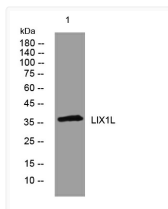
Clonality	Polyclonal
Concentration	1 mg/mL
Conjugation	Unconjugated
Purification	The antibody was affinity-purified from rabbit antiserum by affinity-chromatography using epitope-specific immunogen.
Dilution Range	WB 1:500-2000 IHC-P 1:50-300
Formulation	Liquid in PBS containing 50% Glycerol, 0.5% BSA and 0.02% Sodium Azide.
Isotype	IgG
Molecular Weight	Calculated: 37kD
Storage Instruction	Store at -20°C for up to 1 year from the date of receipt, and avoid repeat freeze-thaw cycles.

TARGET INFORMATION

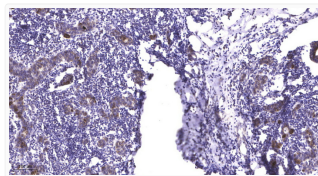
Gene ID	128077
Gene Symbol	LIX1L
UniProt ID	LIX1L_HUMAN
Immunogen Region	34-84 aa
Specificity	This antibody detects endogenous levels of LIX1L at Human/Mouse/Rat

ADDITIONAL INFORMATION

Note **STRICTLY FOR FURTHER SCIENTIFIC RESEARCH USE ONLY (RUO). MUST NOT TO BE USED IN DIAGNOSTIC OR THERAPEUTIC APPLICATIONS.**



Western blot analysis of lysates from HepG2 cells, primary antibody was diluted at 1:1000, 4° overnight STJ194868



Immunohistochemical analysis of paraffin-embedded human breast cancer. 1, Antibody was diluted at 1:200 (4° overnight). STJ194868