

Anti-CCDC6 antibody (104-154 aa) (STJ194426)

GENERAL INFORMATION

Product Type	Primary antibodies
Applications	WB
Host / Source	Rabbit
Reactivity	Human/Mouse

PRODUCT PROPERTIES

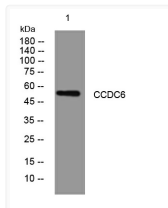
Clonality	Polyclonal
Concentration	1 mg/mL
Conjugation	Unconjugated
Purification	The antibody was affinity-purified from rabbit antiserum by affinity-chromatography using epitope-specific immunogen.
Dilution Range	WB 1:500-2000
Formulation	Liquid in PBS containing 50% Glycerol, 0.5% BSA and 0.02% Sodium Azide.
Isotype	IgG
Molecular Weight	Calculated: 52kD
Storage Instruction	Store at -20°C for up to 1 year from the date of receipt, and avoid repeat freeze-thaw cycles.

TARGET INFORMATION

Gene ID	8030
Gene Symbol	CCDC6
UniProt ID	CCDC6_HUMAN
Immunogen Region	104-154 aa
Specificity	This antibody detects endogenous levels of CCDC6 at Human/Mouse

ADDITIONAL INFORMATION

Note STRICTLY FOR FURTHER SCIENTIFIC RESEARCH USE ONLY (RUO). MUST NOT TO BE USED IN DIAGNOSTIC OR THERAPEUTIC APPLICATIONS.



Western blot analysis of lysates from HeLa cells, primary antibody was diluted at 1:1000, 4°C over night