

## Anti-ANKMY1 antibody (886-936 aa) (STJ194193)

### GENERAL INFORMATION

|               |                    |
|---------------|--------------------|
| Product Type  | Primary antibodies |
| Applications  | WB                 |
| Host / Source | Rabbit             |
| Reactivity    | Human/Rat/Mouse    |

### PRODUCT PROPERTIES

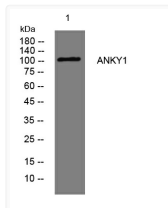
|                     |   |
|---------------------|---|
| Clonality           | Polyclonal  |
| Concentration       | 1 mg/mL   |
| Conjugation         | Unconjugated  |
| Purification        | The antibody was affinity-purified from rabbit antiserum by affinity-chromatography using epitope-specific immunogen. |
| Dilution Range      | WB 1:500-2000   |
| Formulation         | Liquid in PBS containing 50% Glycerol, 0.5% BSA and 0.02% Sodium Azide.   |
| Isotype             | IgG   |
| Molecular Weight    | Calculated: 104kD   |
| Storage Instruction | Store at -20°C for up to 1 year from the date of receipt, and avoid repeat freeze-thaw cycles.                        |

### TARGET INFORMATION

|                  |   |
|------------------|---|
| Gene ID          | <a href="#">51281</a>                                     |
| Gene Symbol      | <a href="#">ANKMY1</a>                                    |
| UniProt ID       | <a href="#">ANKY1_HUMAN</a>                               |
| Immunogen Region | 886-936 aa  |
| Specificity      | This antibody detects endogenous levels of ANKY1 at Human |

### ADDITIONAL INFORMATION

Note STRICTLY FOR FURTHER SCIENTIFIC RESEARCH USE ONLY (RUO). MUST NOT TO BE USED IN DIAGNOSTIC OR THERAPEUTIC APPLICATIONS.



Western blot analysis of lysates from HpeG2 cells, primary antibody was diluted at 1:1000, 4°C over night