

Anti-Phospho-SMC3-Ser1083 antibody (STJ193208)

GENERAL INFORMATION

Product Type	Primary antibodies
Applications	IHC/IF/WB
Host / Source	Rabbit
Reactivity	Human/Mouse/Rat

PRODUCT PROPERTIES

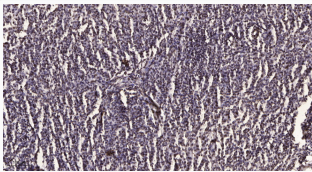
Clonality	Polyclonal
Concentration	1 mg/mL
Conjugation	Unconjugated
Purification	The antibody was affinity-purified from rabbit serum by affinity-chromatography using specific immunogen.
Dilution Range	IHC-P 1:50-200 WB 1:500-2000 IF 1:50-200
Formulation	Liquid in PBS containing 50% Glycerol, 0.5% BSA and 0.02% Sodium Azide.
Isotype	IgG
Molecular Weight	Observed: 145kD
Storage Instruction	Store at -20°C for up to 1 year from the date of receipt, and avoid repeat freeze-thaw cycles.

TARGET INFORMATION

Gene ID	9126
Gene Symbol	SMC3
UniProt ID	SMC3_HUMAN
Specificity	This antibody detects endogenous phospho levels of Bamacan (Phospho-Ser1083) at Human:S1083, Mouse:S1083, Rat:S1083

ADDITIONAL INFORMATION

Note STRICTLY FOR FURTHER SCIENTIFIC RESEARCH USE ONLY (RUO). MUST NOT TO BE USED IN DIAGNOSTIC OR THERAPEUTIC APPLICATIONS.



Immunohistochemical analysis of paraffin-embedded human brain tumor. 1, Antibody was diluted at 1:200 (4°C overnight). 2, Tris-EDTA, pH9.0 was used for antigen retrieval. 3, Secondary antibody was diluted at 1:200 (room temperature, 45min).