

## Anti-APP antibody (STJ193176)

### GENERAL INFORMATION

Product Type	Primary antibodies
Applications	IHC/IF/WB
Host / Source	Rabbit
Reactivity	Human/Hamster

### PRODUCT PROPERTIES

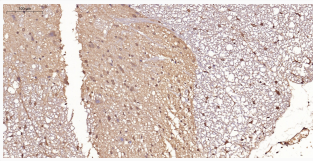
Clonality	Polyclonal
Concentration	1 mg/mL
Conjugation	Unconjugated
Purification	The antibody was affinity-purified from rabbit antiserum by affinity-chromatography using epitope-specific immunogen.
Dilution Range	IHC-P 1:50-200 WB 1:500-2000 IF 1:50-200
Formulation	Liquid in PBS containing 50% Glycerol, 0.5% BSA and 0.02% Sodium Azide.
Isotype	IgG
Molecular Weight	Observed: 87kD
Storage Instruction	Store at -20°C for up to 1 year from the date of receipt, and avoid repeat freeze-thaw cycles.

### TARGET INFORMATION

Gene ID	<a href="#">351</a>
Gene Symbol	<a href="#">APP</a>
UniProt ID	<a href="#">A4_HUMAN</a>
Specificity	This antibody detects endogenous levels of human Amyloid-Beta

### ADDITIONAL INFORMATION

Note STRICTLY FOR FURTHER SCIENTIFIC RESEARCH USE ONLY (RUO). MUST NOT TO BE USED IN DIAGNOSTIC OR THERAPEUTIC APPLICATIONS.



Immunohistochemical analysis of paraffin-embedded human brain tissue. 1, Polyclonal Antibody was diluted at 1:200 (4°C overnight). 2, EDTA pH 9.0 was used for antigen retrieval (>98°C, 20min). 3, Secondary antibody was diluted at 1:200 (room temperature, 30min) (Negative control was used by secondary antibody only.)