

## Anti-OR7E24 antibody (STJ192688)

### GENERAL INFORMATION

Product Type	Primary antibodies
Applications	WB/ELISA
Host / Source	Rabbit
Reactivity	Human/Rat/Mouse

### PRODUCT PROPERTIES

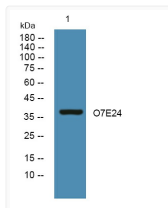
Clonality	Polyclonal
Concentration	1 mg/mL
Conjugation	Unconjugated
Purification	The antibody was affinity-purified from rabbit antiserum by affinity-chromatography using epitope-specific immunogen.
Dilution Range	WB 1:500-2000 ELISA 1:5000-20000
Formulation	Liquid in PBS containing 50% Glycerol and 0.02% Sodium Azide.
Isotype	IgG
Molecular Weight	Observed: 37kD
Storage Instruction	Store at -20°C for up to 1 year from the date of receipt, and avoid repeat freeze-thaw cycles.

### TARGET INFORMATION

Gene ID	<a href="#">26648</a>
Gene Symbol	<a href="#">OR7E24</a>
UniProt ID	<a href="#">O7E24_HUMAN</a>
Specificity	O7E24 Polyclonal Antibody detects endogenous levels of protein.

### ADDITIONAL INFORMATION

Note STRICTLY FOR FURTHER SCIENTIFIC RESEARCH USE ONLY (RUO). MUST NOT TO BE USED IN DIAGNOSTIC OR THERAPEUTIC APPLICATIONS.



Western blot analysis of lysates from SW480 cells, primary antibody was diluted at 1:1000, 4°C over night