

Anti-HAND2 antibody (STJ192196)

GENERAL INFORMATION

Product Type	Primary antibodies
Applications	WB/ELISA
Host / Source	Rabbit
Reactivity	Human/Rat/Mouse

PRODUCT PROPERTIES

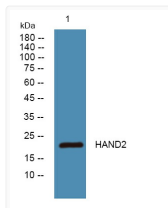
Clonality	Polyclonal
Concentration	1 mg/mL
Conjugation	Unconjugated
Purification	The antibody was affinity-purified from rabbit antiserum by affinity-chromatography using epitope-specific immunogen.
Dilution Range	WB 1:500-2000 ELISA 1:5000-20000
Formulation	Liquid in PBS containing 50% Glycerol and 0.02% Sodium Azide.
Isotype	IgG
Molecular Weight	Observed: 23kD
Storage Instruction	Store at -20°C for up to 1 year from the date of receipt, and avoid repeat freeze-thaw cycles.

TARGET INFORMATION

Gene ID	9464
Gene Symbol	HAND2
UniProt ID	HAND2_HUMAN
Specificity	HAND2 Polyclonal Antibody detects endogenous levels of protein.

ADDITIONAL INFORMATION

Note STRICTLY FOR FURTHER SCIENTIFIC RESEARCH USE ONLY (RUO). MUST NOT TO BE USED IN DIAGNOSTIC OR THERAPEUTIC APPLICATIONS.



Western blot analysis of lysates from K562 cells, primary antibody was diluted at 1:1000, 4°C over night