

## Anti-NR2C1 antibody (40-120 aa) (STJ190193)

### GENERAL INFORMATION

Product Type	Primary antibodies
Applications	WB/ELISA
Host / Source	Rabbit
Reactivity	Human/Mouse/Rat

### PRODUCT PROPERTIES

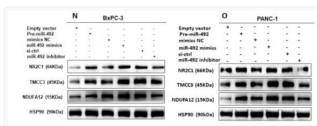
Clonality	Polyclonal
Concentration	1 mg/mL
Conjugation	Unconjugated
Purification	The antibody was affinity-purified from rabbit antiserum by affinity-chromatography using epitope-specific immunogen.
Dilution Range	WB 1:500-2000 ELISA 1:5000-20000
Formulation	Liquid in PBS containing 50% Glycerol and 0.02% Sodium Azide.
Isotype	IgG
Molecular Weight	Observed: 66kD
Storage Instruction	Store at -20°C for up to 1 year from the date of receipt, and avoid repeat freeze-thaw cycles.

### TARGET INFORMATION

Gene ID	<a href="#">7181</a>
Gene Symbol	<a href="#">NR2C1</a>
UniProt ID	<a href="#">NR2C1_HUMAN</a>
Immunogen Region	40-120 aa
Specificity	NR2C1 Polyclonal Antibody detects endogenous levels of protein.

### ADDITIONAL INFORMATION

Note **STRICTLY FOR FURTHER SCIENTIFIC RESEARCH USE ONLY (RUO). MUST NOT TO BE USED IN DIAGNOSTIC OR THERAPEUTIC APPLICATIONS.**



NamiRNA-enhancer network of miR-492 activates the NR2C1-TGF- $\beta$ /Smad3 pathway to promote epithelial-mesenchymal transition of pancreatic cancer CARCINOGENESIS Jin Wang IHC, WB mouse, Human BxPC-3 cell-Xenograft PANC-1 cells, BxPC-3 cells