

## Anti-MUC6 antibody (1000-1100 aa) [ABT351] (STJ190075)

### GENERAL INFORMATION

Product Type	Primary antibodies
Applications	IHC
Host / Source	Mouse
Reactivity	Human/Mouse/Rat

### PRODUCT PROPERTIES

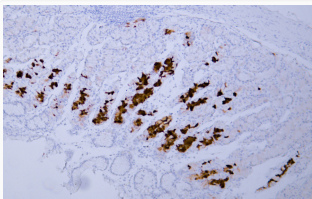
Clonality	Monoclonal
Conjugation	Unconjugated
Purification	The antibody was affinity-purified from mouse ascites by affinity-chromatography using specific immunogen.
Dilution Range	IHC-P 1:200-400
Formulation	Liquid in PBS pH7.2, 0.03% Proclin 300, with stabilizing protein.
Isotype	IgG2ak
Molecular Weight	Calculated: 257kD
Storage Instruction	Store at -20°C for up to 1 year from the date of receipt, and avoid repeat freeze-thaw cycles.

### TARGET INFORMATION

Gene ID	<a href="#">4588</a>
Gene Symbol	<a href="#">MUC6</a>
UniProt ID	<a href="#">MUC6_HUMAN</a>
Immunogen Region	1000-1100 aa
Specificity	The antibody can specifically recognize human MUC6 protein.. The antibody was also Predict react with Mouse;Rat

### ADDITIONAL INFORMATION

Note STRICTLY FOR FURTHER SCIENTIFIC RESEARCH USE ONLY (RUO). MUST NOT TO BE USED IN DIAGNOSTIC OR THERAPEUTIC APPLICATIONS.



Human stomach tissue was stained with Anti-MUC6 (ABT351) Antibody