

Anti-CD25 antibody (ECD) [ZM466] (STJ180671)

GENERAL INFORMATION

Product Type	Primary antibodies
Applications	IHC-P
Host / Source	Mouse
Reactivity	Human

PRODUCT PROPERTIES

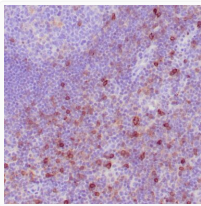
Clonality	Monoclonal
Conjugation	Unconjugated
Purification	Affinity purified
Dilution Range	1:100-200
Formulation	Tris-HCl buffer containing stabilizing protein (BSA) and <0.1% ProClin
Isotype	IgG2b
Storage Instruction	Store at 2-8°C for up to 24 months. Predilute: Ready to use, no reconstitution necessary. Concentrate: Use dilution range and appropriate lab-standardized diluent. Stability after dilution: 7 days at 24°C, 3 months at 2-8°C, 6months at -20°C.

TARGET INFORMATION

Gene ID	3559
Gene Symbol	IL2RA
UniProt ID	IL2RA_HUMAN
Immunogen Region	ECD
Specificity	Positive Control: Tonsil or lymph node

ADDITIONAL INFORMATION

Note STRICTLY FOR FURTHER SCIENTIFIC RESEARCH USE ONLY (RUO). MUST NOT TO BE USED IN DIAGNOSTIC OR THERAPEUTIC APPLICATIONS.



Anti-CD25 antibody IHC human spleen
STJ180671