

## Anti-CPA1 antibody (Full Length) [ZR450] (STJ180641)

### GENERAL INFORMATION

Product Type	Primary antibodies
Applications	IHC-P
Host / Source	Rabbit
Reactivity	Human

### PRODUCT PROPERTIES

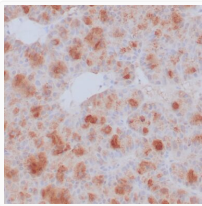
Clonality	Monoclonal
Conjugation	Unconjugated
Purification	Affinity purified
Dilution Range	1:100-200
Formulation	Tris-HCl buffer containing stabilizing protein (BSA) and <0.1% ProClin
Isotype	IgG
Storage Instruction	Store at 2-8°C for up to 24 months. Predilute: Ready to use, no reconstitution necessary. Concentrate: Use dilution range and appropriate lab-standardized diluent. Stability after dilution: 7 days at 24°C, 3 months at 2-8°C, 6months at -20°C.

### TARGET INFORMATION

Gene ID	<a href="#">1357</a>
Gene Symbol	<a href="#">CPA1</a>
UniProt ID	<a href="#">CBPA1_HUMAN</a>
Immunogen Region	Full Length
Specificity	Positive Control: Pancreatic acinar cell carcinoma

### ADDITIONAL INFORMATION

Note STRICTLY FOR FURTHER SCIENTIFIC RESEARCH USE ONLY (RUO). MUST NOT TO BE USED IN DIAGNOSTIC OR THERAPEUTIC APPLICATIONS.



Anti-CPA1 antibody IHC human pancreatic acinar cell carcinoma STJ180641