

## Anti-Erythropoietin antibody (28-162aa) [ZM135] (STJ180351)

### GENERAL INFORMATION

Product Type	Primary antibodies
Applications	IHC-P
Host / Source	Mouse
Reactivity	Human

### PRODUCT PROPERTIES

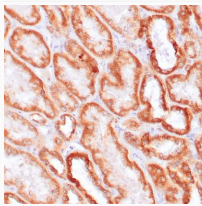
Clonality	Monoclonal
Conjugation	Unconjugated
Purification	Affinity purified
Dilution Range	1:100-200
Formulation	Tris-HCl buffer containing stabilizing protein (BSA) and <0.1% ProClin
Isotype	IgG1k
Storage Instruction	Store at 2-8°C for up to 24 months. Predilute: Ready to use, no reconstitution necessary. Concentrate: Use dilution range and appropriate lab-standardized diluent. Stability after dilution: 7 days at 24°C, 3 months at 2-8°C, 6months at -20°C.

### TARGET INFORMATION

Gene ID	<a href="#">2056</a>
Gene Symbol	<a href="#">EPO</a>
UniProt ID	<a href="#">EPO_HUMAN</a>
Immunogen Region	28-162aa
Specificity	Positive control: Kidney

### ADDITIONAL INFORMATION

Note STRICTLY FOR FURTHER SCIENTIFIC RESEARCH USE ONLY (RUO). MUST NOT TO BE USED IN DIAGNOSTIC OR THERAPEUTIC APPLICATIONS.



Anti-Erythropoietin antibody IHC Human kidney  
STJ180351